

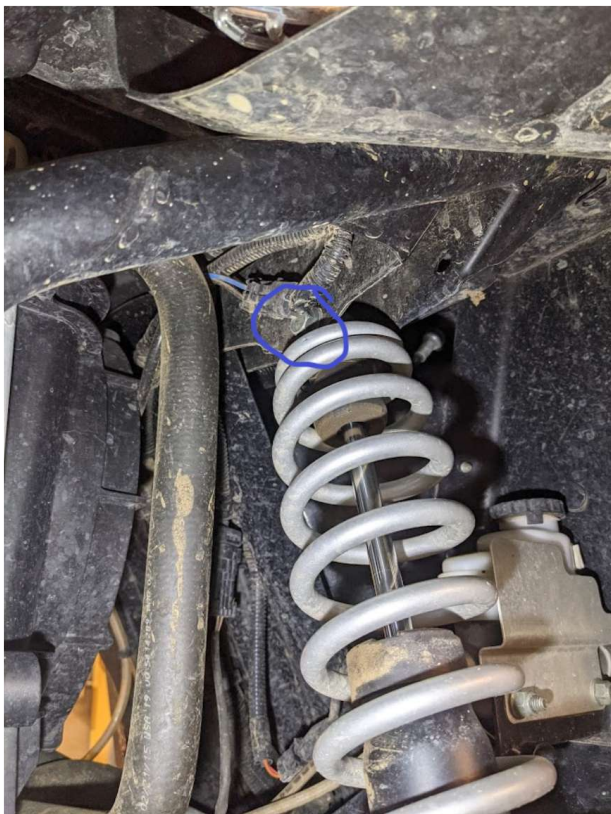
2-3" Lift Kit For Ranger

FITMENT

Polaris Ranger XP 570 : 2015-2016
Polaris Ranger XP 570 Crew : 2015-2016
Polaris Ranger XP 900 : 2013+
Polaris Ranger XP 900 Crew : 2013+
Polaris Ranger XP 1000 : 2017
Polaris Ranger XP 1000 Crew : 2017-18
Polaris Ranger XP 1000 High Lifter : 2017-18
Polaris Ranger XP 1000 High Lifter Crew : 2017-18
Polaris Ranger XP 1000 NorthStar Edition : 2017
Polaris Ranger XP 1000 NorthStar Edition Crew : 2017-18
Polaris Ranger 1000 Diesel : 2015-2018
Polaris Ranger 1000 Diesel Crew : 2015-2018

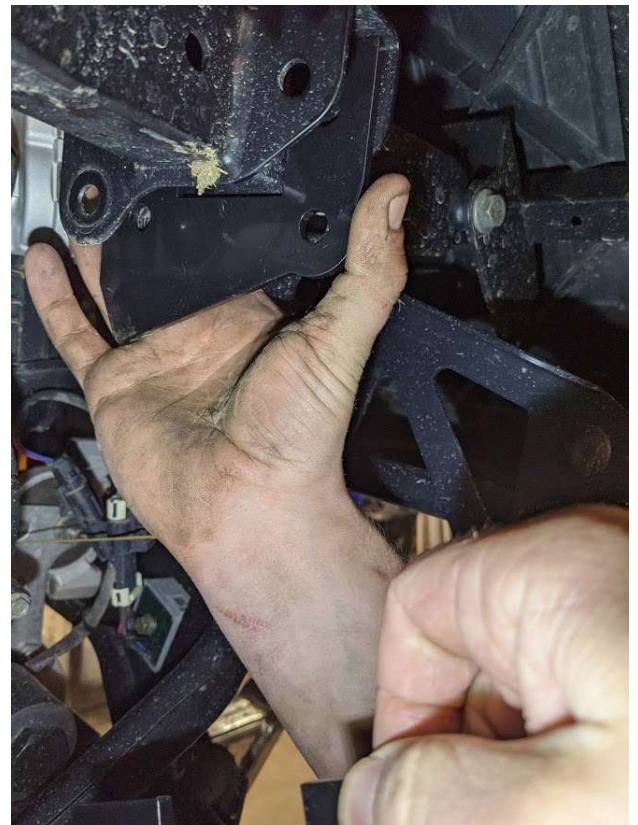
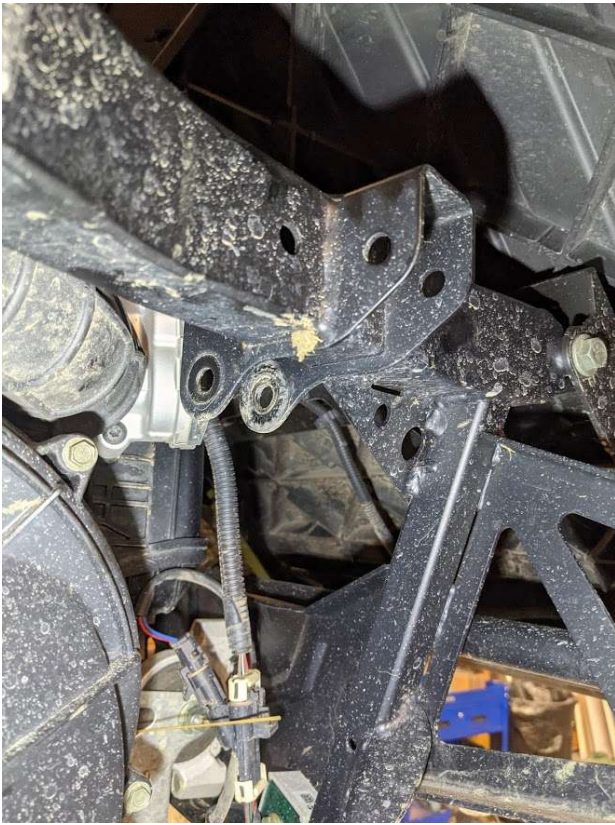
CONTENTS OF KIT:



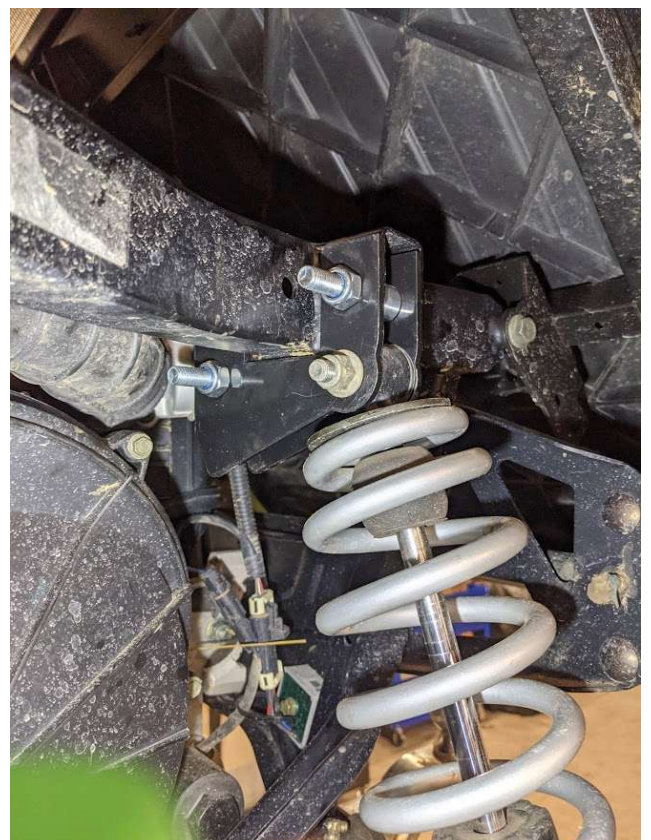
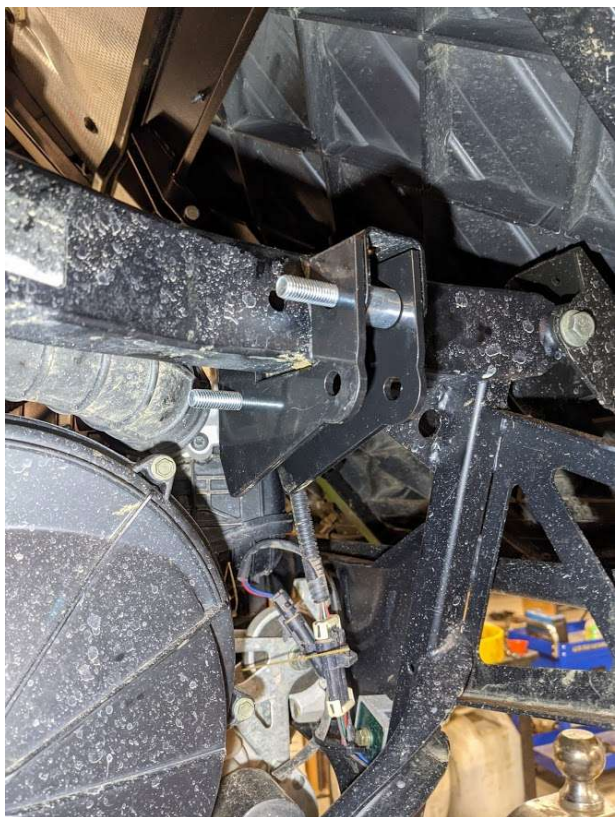


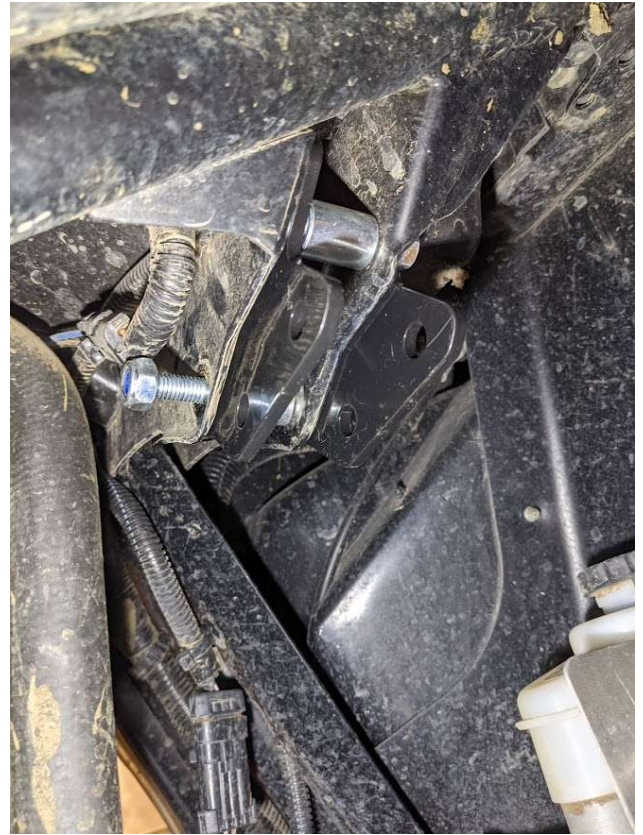
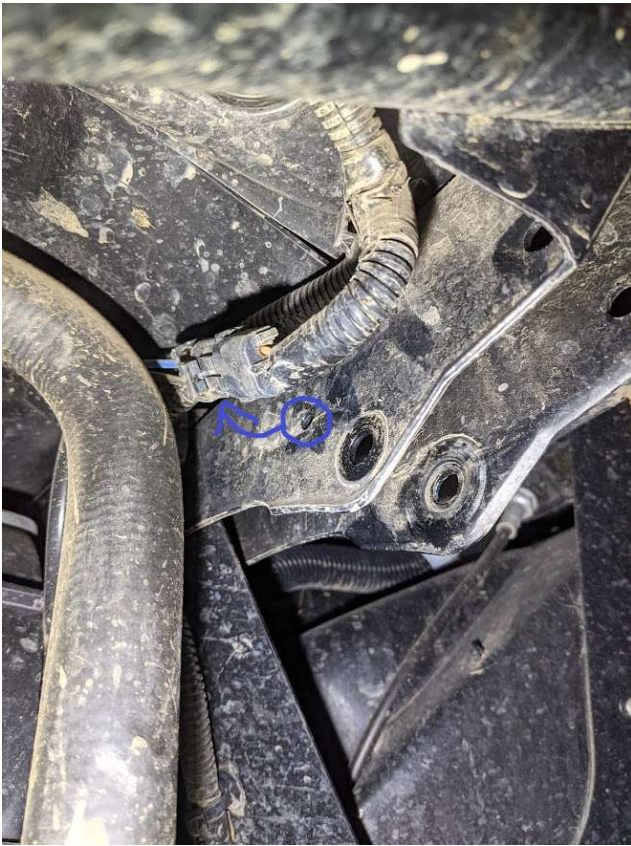
Lift vehicle, remove wheels, then remove upper and lower shock mounting bolts as circled in pictures here:





Install the rear brackets as shown here using supplied bolts, spacers, and lock nuts. Reinstall the upper and lower shock bolts using original hardware.





Install the front brackets as shown here using supplied bolts, spacers, and lock nuts. Notice how the wire that runs here must be removed from its mounting in order to clear the new bracket. Reinstall the upper and lower shock bolts using original hardware.



Make sure that all bolts are tight (refer to factory specs). The front bracket has two shock locations – the outer one is for a leveled look, the inner one will retain a slight “rake” to the front end like factory (sits slightly lower in front). If you would like additional lift, crank the settings up on the shock adjusters.

Any issues with install, please call or email us, we can help!

**info@sidebysideoutlet.com
208-881-5949**