



780 Professional Drive N. Shreveport, LA 71105 Phone (318)-524-2270 Fax (318)-524-2297  
www.highlifter.com

**KLKM3000-00**

#### Read before Installation

This product is designed for use on ATVs and/or RUVs to increase ground clearance and fender clearance. Purchasers should be aware that use of this product may increase the frequency of required maintenance, part wear, and will raise the center of gravity on your ATV and/or RUV, increasing risk of roll-over, injury and death on all types of terrain. It is your responsibility to always inform other operators and passengers of this vehicle about the added risks.

High Lifter Products, products are designed to best fit users ATV/RUV under stock conditions. Adding, modifying, or fabricating any OEM or aftermarket parts will void warranty. High Lifter Products, products could interfere with other aftermarket accessories. If the user has aftermarket products on machine, contact High Lifter Products to verify that they will work together. Adding aftermarket suspension components and/or more aggressive tires can cause breakage of other OEM driveline components such as differentials, axles or drive shafts.

We recommend that wider tires and/or wheel spacers be used to achieve a wider stance and to improve stability of the ATV and/or RUV. Riders should be advised that the handling characteristics of a taller ATV and/or RUV are different and require extra care when riding, particularly on side hills or off-camber situations. If you further raise the center of gravity by adding taller tires, heavy loads to racks or seats, or by any other means, the ATV and/or RUV must be operated with even more care, at slower speeds and on relatively flat ground. All turns should be done at a slow speed, even on level ground.

Operation of an ATV and/or RUV with or without modified suspension components, while or shortly after consuming alcohol or drugs, subjects the rider to the risk of serious bodily harm or possible death. This risk is compounded if the rider does not wear an approved helmet and other safety gear. High Lifter urges that all approved safety gear be worn when riding an ATV and/or RUV as a driver or passenger.

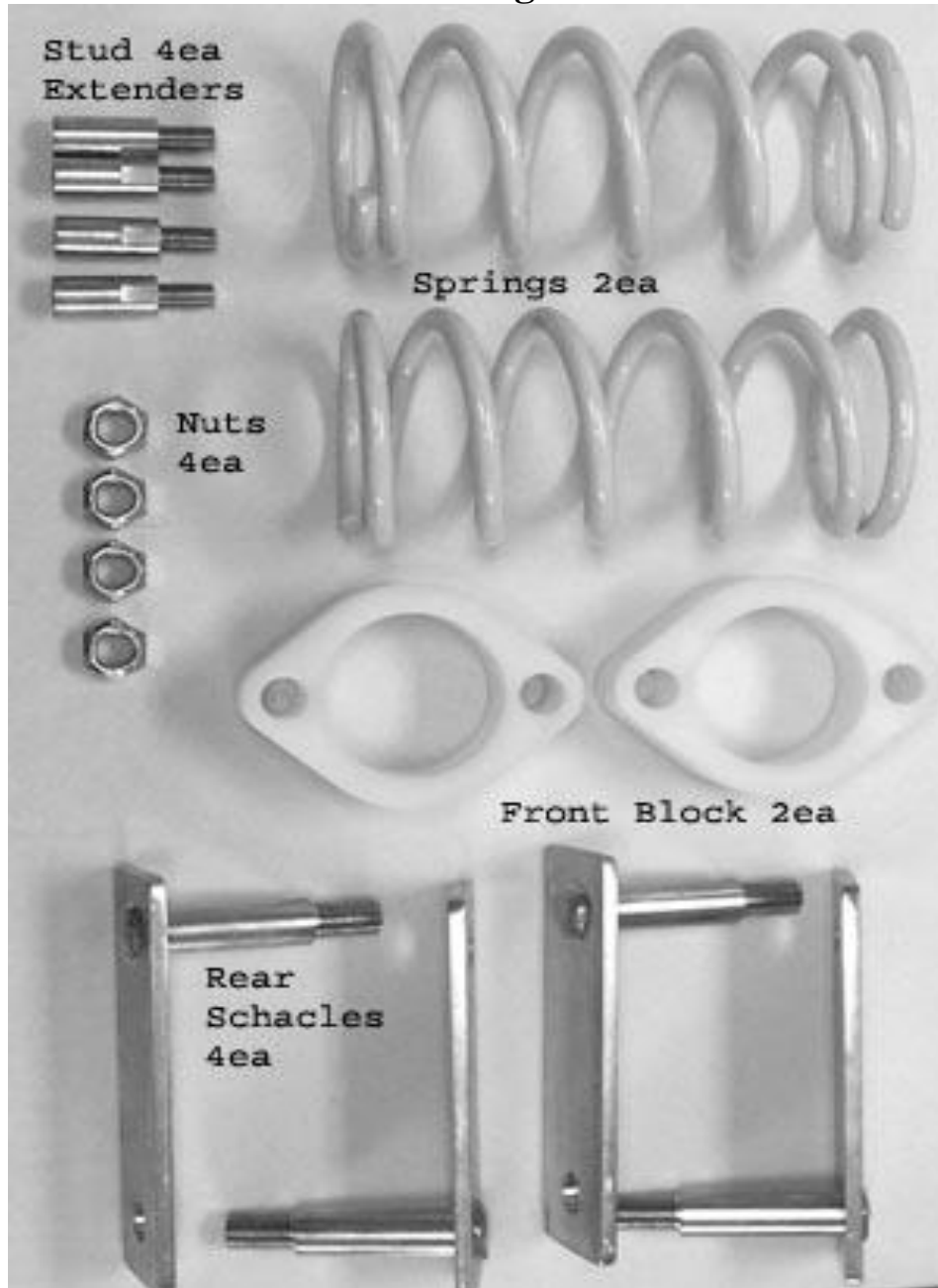
By purchasing and installing High Lifter Products, products, user agrees that should damages occur, High Lifter Products will not be held responsible for loss of time, use, labor fees, replacement parts, or freight charges. High Lifter Products will not be held responsible for any direct, indirect, incidental, special, or consequential damages that result from any product purchased from High Lifter Products. The total liability of seller to user for all damages, losses, and causes of action, shall not exceed the total purchase price paid for the product that gives rise to the claim.

#### Dealers and other Installers

You are responsible for informing your customer and end user of the information contained above and the increased potential hazards of operating an ATV and/or RUV equipped with modified suspension components. If you install any suspension modifying components, it is your responsibility to also install the warning label prominently in view of the driver and in prominent view of the driver and passenger on RUVs and multi-passenger ATVs. They should also be instructed to notify anyone operating the vehicle, as well as any passengers, that said vehicle is modified.

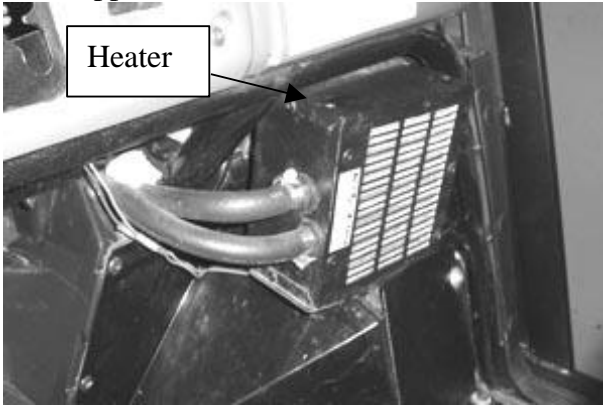
As discussed above, it is critically important that they be instructed in the need for slower speed operation, regardless of terrain, after this lift kit is installed.

## Parts Diagram

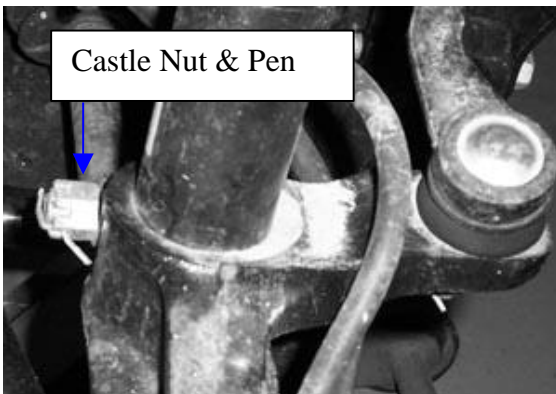


# Front Lift Installation

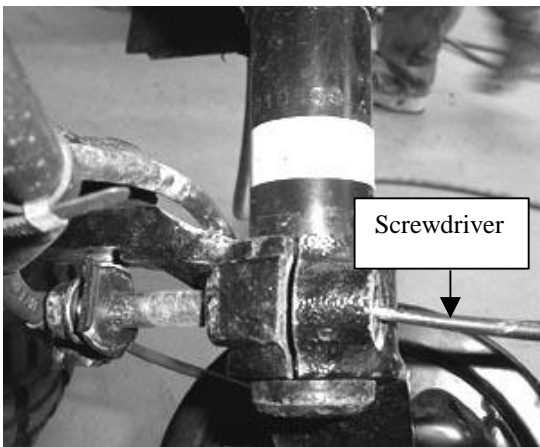
1. Ensuring that the parking brake is set, place jack under center of the Mule front end and lift until front wheels clear the ground. Be careful to support Mule properly so that it is secure, but so that the A-arms and struts can droop to full extension.
2. Remove front wheels.
3. If applicable, remove the heater to allow access to the strut mount behind the heater coil.



4. Starting with the left side (driver side), remove the cotter pin and castle nut that secures the strut to the strut mount.



5. Push bolt through the bolthole, taking care not to damage the brake line that is attached to the bolt. If you are having difficulty removing the bolt, you may have to remove the brake lines that are attached to the front brakes. In this case refer to owners manual for removing brake lines.



NOTE: Keep in mind that if you remove the brake lines you must bleed your brakes according to operator's manual.

6. Once the bottom of the strut has been loosened, then unbolt the top of the strut. The nuts securing the top strut can be located in the dash of the Mule on the left and right sides. In most cases these nuts are easily accessible, but you may have to remove the glove box or heater coils, depending on the model and options purchased with the Mule.



7. Remove the nuts that secure the strut and then pull strut from the strut mount. If strut is hard to remove, you may have to open the mount up.



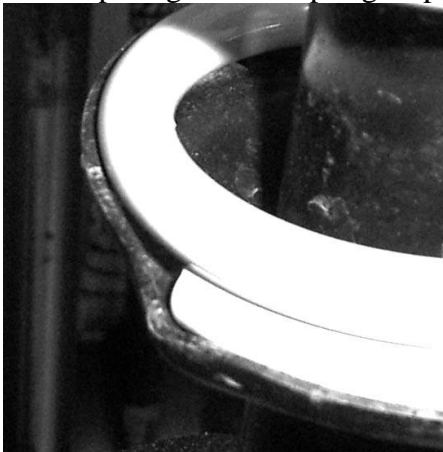
8. Remove the retaining nut and washer from the top of the strut. Next remove the factory rubber mount/bushing, coil retaining cup and boot.



9. Now remove the factory coil spring.



10. Install the new High Lifter coil spring onto the strut shaft, making sure the end of the bottom spring wrap is against the spring stop.

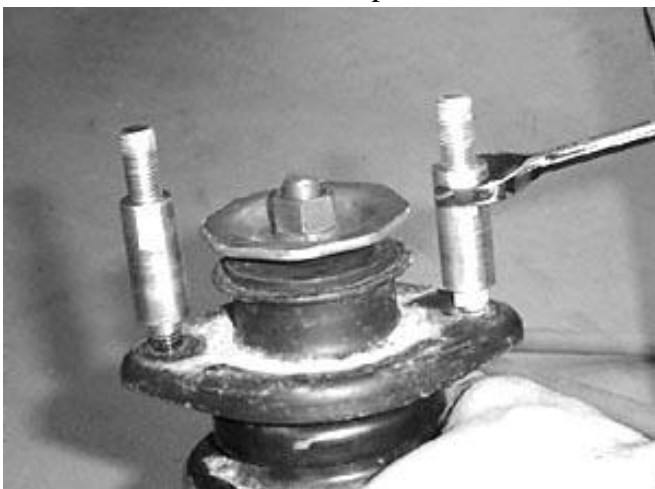


11. Reassemble the strut in reverse order of the disassembly.

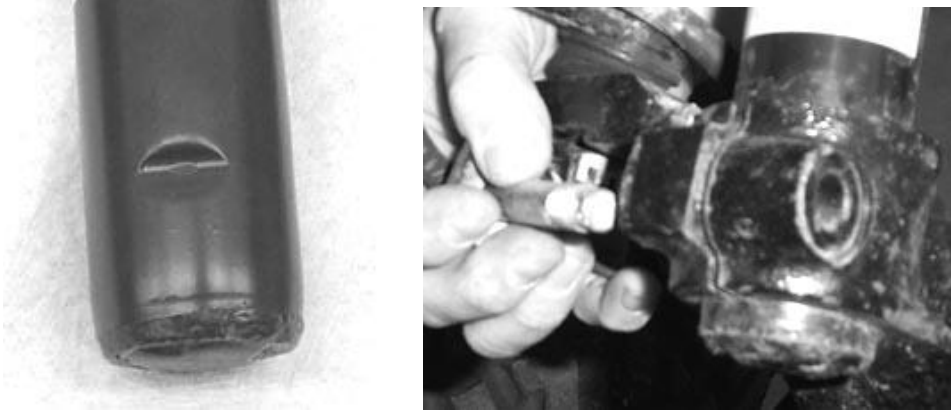
NOTE: The spring may need to be compressed a small amount during the reassembly process.

12. Holding the large hex nut and washer, tighten the retaining bolt until the lock washer is compressed and tightened.

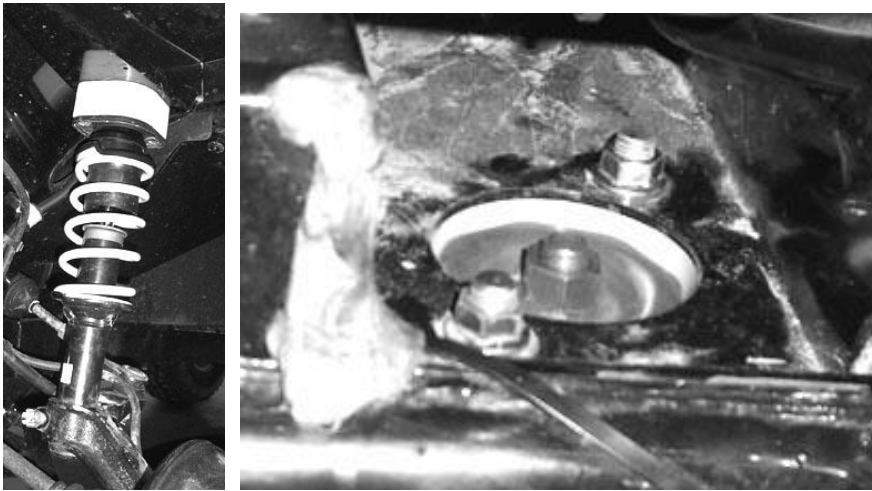
13. Once the strut is reassembled, tighten 2 of the stud extenders onto the top of the strut. Next, slide one of the lift blocks onto the top of the strut.



14. Once the block is in place reinstall the strut back onto the Mule. Start by placing the bottom of the strut into the lower strut mount. Make sure to line the mark on the strut with the securing bolt on the strut mount. **DO NOT FASTEN TIGHT!**



15. Next, insert the top of the strut into the two mounting holes in the dash. Secure the strut with the OEM nuts.



NOTE: If you are having difficulty with top mount, turn the steering wheel to the left or right, opposite the side you are working on.

16. With the top completely installed, secure the bottom of the strut with the OEM retaining bolt. Make sure that the notch on the strut and the bolt are parallel with each other.

17. Repeat step for opposite side.

# Rear Lift Installation

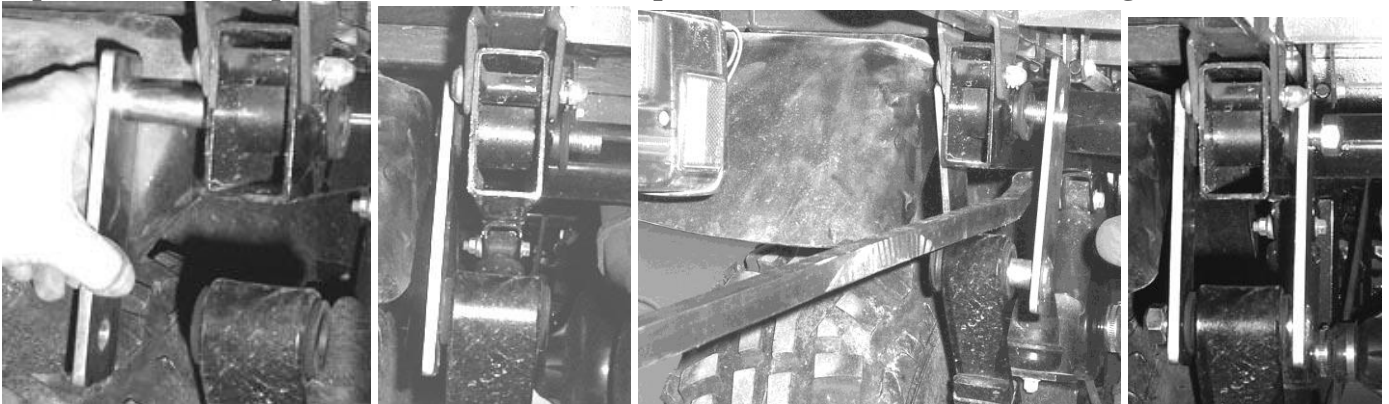
1. Ensuring that the parking brake is set, place jack under the rear differential of the Mule and lift until rear wheels clear the ground. Be careful to support Mule properly so that it is secure, and chock the front wheels.
2. Remove the top of the rear shock only. This will make it easier to remove and install the rear leaf spring shackles
3. Remove the rear leaf spring shackles.



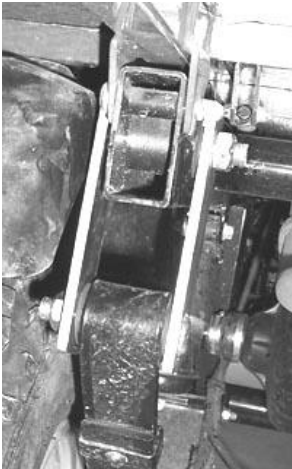
**Note: You may need a large pry bar to help disassemble and reassemble the rear shackles.**

4. Install the new shackles on the Mule, using the pry bar to help align the shackles and the leaf springs.

**Tip: Put a little soap on the shackle studs to help them slid into the rubber bushings better.**



5. Once the shackles are installed secure with the nuts provided.



6. Reattach shock and repeat steps for opposite side.



**Thank You**

**For choosing**







### **High Lifter Lifetime Warranty**

From the beginning, High Lifter has engineered and manufactured some of the toughest, most durable products on the market. That's why this product comes with a Lifetime Warranty. It's our promise that High Lifter will never let you down.

- The **Lifetime Warranty** covers products sold to the original purchaser only and is not transferable. The term of the warranty is for the lifetime of the vehicle in question.
- Normal wear and tear items and finishes, such as, but not limited to: Heim joints, tie rod ends, ball joints, bearings, seals, bushings, bushing sleeves, zinc plating, powder coating, or chipping and discoloration of any finish is not covered.
- High Lifter will ship the replacement product after the returned product has been inspected by High Lifter staff.
- The warranty shall not include claims for damages, installation time or labor charges, economic losses, inconvenience, transportation, towing, down time, direct or indirect or consequential damages or delay resulting from any defect.
- The warranty does not apply to products that have been improperly applied or improperly installed.

### **Making a warranty claim**

1. All claims must be accompanied by the part and the original sales receipt or other acceptable proof of purchase from the original owner.
2. All warranties must be accompanied with a Return Merchandise Authorization (RMA) number. (Contact High Lifter at 318-524-2270 or 800-699-0947 for an RMA number)
3. When shipping the damaged product:
  - a. Write the RMA number on the outside of the box.
  - b. Also include the RMA number, proof of purchase and any notes inside the box.
  - c. Please keep your tracking number and shipment information.
4. The customer is responsible for shipping the product to High Lifter--return shipping within the lower 48 states will be paid by High Lifter products. With all warranty claims, only standard shipping services apply.
5. High Lifter will process your order within 24 business hours of receiving the returned item.
6. **Ship to:** High Lifter Products, 780 Professional Drive North, Shreveport, Louisiana 71105