

POWER VISION

Yamaha Wolverine X2 Installation Guide

WOLVERINE[®]

PARTS LIST

×

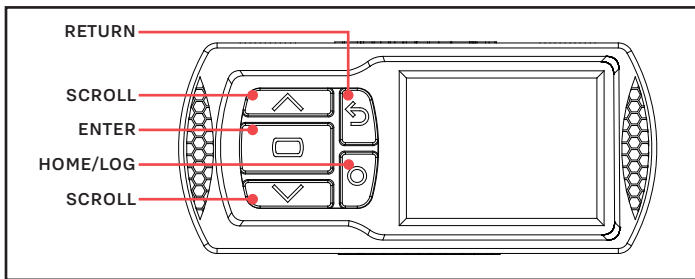
- | | |
|-------------------|-----------------|
| 1 POWER VISION | 2 VELCRO |
| 1 REFLASH HARNESS | 2 DYNOJET DECAL |
| 1 USB CABLE | |

PLEASE READ ALL DIRECTIONS BEFORE STARTING INSTALLATION

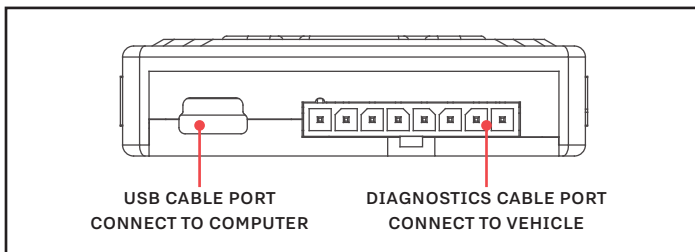
×

98200134.03

INTRODUCTION



POWER VISION OVERVIEW—FRONT VIEW



POWER VISION OVERVIEW—SIDE VIEW

Thank you for purchasing the Power Vision from Dynojet Research. The Power Vision is the device to interface between your computer and vehicle ECU allowing you to tune your stock ECU to achieve optimal performance from your vehicle.

Use the buttons to navigate the device menus, make selections, cycle through the four available gauge screens, and log data. Connect to the diagnostic port to flash a tune; use the USB connection to interface between the Power Vision and your computer.

For state of the art technical support, please visit www.dynojet.zendesk.com.

INSTALLING THE POWER VISION



DIAGNOSTIC PORT

1 Secure the Power Vision to the vehicle using the supplied Velcro. Make sure the Power Vision will not interfere with the operation and steering of the vehicle.

Note: The Power Vision does not need to be mounted to the vehicle.

2 Attach the diagnostic cable to the diagnostic port on the Power Vision and to the diagnostic port on the vehicle. The diagnostic port is located under the front cover.

3 **When done riding, be sure to unplug the Power Vision to avoid draining the battery.**

GETTING STARTED

Use the Tune File Wizard to prepare your Power Vision device with the stock (.stk) and tune (.djt) files needed to flash your vehicle.

- 1 Connect the Power Vision to the vehicle.
- 2 Turn the key on. The Power Vision will scan for files.

There are three possible file states:

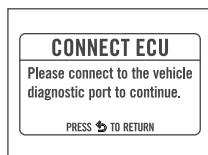
File State 1: No compatible tune or stock files.

File State 2: No compatible tune files.

File State 3: All required files found.

- 3 Gauges are displayed.

Connect the Power Vision to the vehicle diagnostic port to collect ECU information. Turn the key on.



File State 1:

Go to www.tunes.dynojet.com to download stock and tune files.

GETTING STARTED

NO COMPATIBLE STOCK FILES

To download tunes, visit:
WWW.TUNES.DYNOJET.COM
PRESS ⏪ TO SEARCH AGAIN

File State 2:

Go to www.tunes.dynojet.com to download tune files.

GETTING STARTED

NO COMPATIBLE TUNE FILES

To download tunes, visit:
WWW.TUNES.DYNOJET.COM
PRESS ⏪ TO SEARCH AGAIN

File State 3:

All required files found. The Power Vision is ready to flash a tune to the connected vehicle.

READY TO FLASH

ALL REQUIRED FILES FOUND

PRESS ⏪ TO READ ECU
PRESS ↵ TO EXIT WIZARD

FLASHING YOUR VEHICLE

The Power Vision must be paired to the connected vehicle ECU to function properly.

Note: Once paired to the vehicle ECU, the Power Vision will not work on another vehicle without purchasing a tune license.

- 1 From the Main Menu, select **Flash Tune**.
- 2 Select the tune file (.djt) and press **Enter** to view the Tune Info. The Tune Info screen contains the technical notes showing what was changed in the tune.

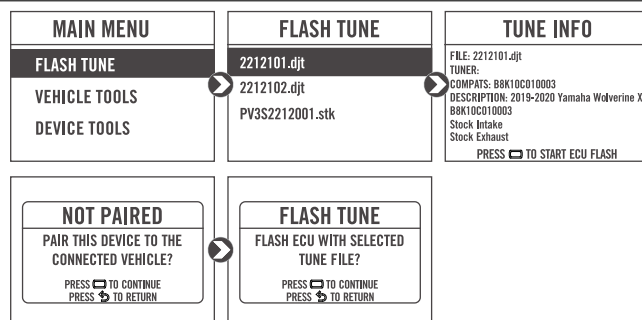
Note: The PV3 filters out files which are not compatible with the connected vehicle based on year/trim delivered direct from the factory and result in varied tune Compat and CheckSum within the ECU. Additional files may be visible on the device when connected via USB or on the website; however, the PV3 will only display files which directly fit your vehicle.

Note: The Dynojet tune file (.djt) is a tune file which is different (better than stock performance or the necessary file when bolting on an exhaust, for example); the stock file (.stk) is the direct duplicate of what the OEM shipped.

- 3 Press **Enter** to accept the tune, or restore the ECU to original stock (.stk) file, and pair the Power Vision to the vehicle.

Note: Pair to vehicle will only happen on the first flash.

- 4 Press **Enter** to pair and lock the Power Vision to the ECU and to begin the flash. Do not turn off the key switch or disconnect the Power Vision during the flash.
- 5 After the flash is complete, turn the key off and wait 45 seconds before turning the key back on to start.



VIEWING THE VEHICLE INFORMATION

This menu allows you to view the device status (paired/not paired), VIN #, Model ID, ECU serial number, tune compat, and checksum compat.

Select **Vehicle Tools>Vehicle Information**.

MAIN MENU	VEHICLE TOOLS	VEHICLE INFO
FLASH TUNE	VEHICLE INFORMATION	PAIRED VEHICLE: DEVICE NOT PAIRED
VEHICLE TOOLS	DIAGNOSTICS	VIN:
DEVICE TOOLS	READ ECU	MODEL ID:
		TUNE COMPAT: B8K10C010003
		CHECKSUM COMPAT:

VIEWING THE DIAGNOSTIC CODES

This menu allows you to read and clear diagnostic trouble codes.

- 1 To read codes, select **Vehicle Tools>Diagnostics>Active Codes**.
- 2 To clear codes, select **Vehicle Tools>Diagnostics>Clear Codes**.

MAIN MENU	VEHICLE TOOLS	DIAGNOSTICS
FLASH TUNE	VEHICLE INFORMATION	ACTIVE CODES
VEHICLE TOOLS	DIAGNOSTICS	HISTORIC CODES
DEVICE TOOLS	READ ECU	CLEAR CODES

RESTORING THE ECU

This menu allows you to restore the ECU. Use Restore ECU if the device does not complete the flash or if your vehicle will not start.

Select **Vehicle Tools>Restore ECU**.

MAIN MENU	VEHICLE TOOLS	RESTORE ECU
FLASH TUNE	READ ECU	RESTORE ECU TO ORIGINAL STK FILE?
VEHICLE TOOLS	DELETE DATA LOG	PRESS ↵ TO CONTINUE
DEVICE TOOLS	RESTORE ECU	PRESS ⏪ TO RETURN

CONFIGURING GAUGES

This menu allows you to configure up to four different gauge screens. Each gauge screen has four configurable channels.

- 1 From the Main Menu, select **Device Tools>Configure Gauges**.
- 2 Select a gauge screen and press **Enter**.
- 3 Select a channel and press **Enter**.
- 4 Select a channel from the list and press **Enter**.
- 5 Select the precision or units for that channel and press **Enter**.
- 6 Continue setting up the remaining channels as desired.
- 7 Continue configuring the remaining gauge screens as desired.

MAIN MENU	DEVICE TOOLS	CONFIGURE GAUGES
FLASH TUNE	CONFIGURE GAUGES	SCREEN 1
VEHICLE TOOLS	DEVICE INFORMATION	SCREEN 2
DEVICE TOOLS	REFORMAT DISK	SCREEN 3
		SCREEN 4

CONFIGURE SCREEN	SELECT UNIT	SELECT PRECISION
CHANNEL 1	RPM	0
CHANNEL 2	RPMx10	0.0
CHANNEL 3	RPMx100	0.00
CHANNEL 4	RPMx1000	0.000

LOGGING DATA

- 1 Press the **Log** button to begin logging. The Power Vision screen will illuminate a bright red banner across the top when logging.
- 2 Press the **Log** button again to stop logging.
- 3 Use the Power Core software to view log files.

- 3 Use the Power Core software to view log files.

Snapshot Log: Press and hold the **Log** button for two seconds to record the previous two minutes of operating time.

DATA LOG	DYNO-JET	SAVING LOG
DATA LOGGING HAS STARTED. PRESS AGAIN TO STOP	Engine Speed 2550 RPM AFR 1 14.6 AFR	SAVING LOG...
	TPS 10.5 STFT -6.3	

DATA LOG
2212101_LOG_1.wp8 SAVED SUCCESSFULLY

DELETING DATA LOGS

This menu allows you to delete data logs.

- 1 Select **Vehicle Tools>Delete Data Log**.
- 2 Select a specific log to delete or select ***Delete All Logs***.

MAIN MENU	VEHICLE TOOLS	LOG FILES
FLASH TUNE	DIAGNOSTICS	*Delete All Logs*
VEHICLE TOOLS	READ ECU	2212101_LOG_1.wp8
DEVICE TOOLS	DELETE DATA LOG	2212101_LOG_2.wp8
		2212101_LOG_3.wp8

VIEWING THE DEVICE INFORMATION

This menu allows you to view the device firmware version, serial number, and stock code.

Select **Device Tools>Device Information**.

MAIN MENU	DEVICE TOOLS	DEVICE INFORMATION
FLASH TUNE	CONFIGURE GAUGES	DYNOJET POWER VISION
VEHICLE TOOLS	DEVICE INFORMATION	FW VERSION: 6.1.7103.30573
DEVICE TOOLS	REFORMAT DISK	SERIAL NUMBER: PV00028622
		STOCK CODE: 76125081

REFORMATTING THE DISK

This menu allows you to reformat the disk and erase all data.

Select **Device Tools>Reformat Disk**.

MAIN MENU	DEVICE TOOLS	REFORMAT DISK
FLASH TUNE	CONFIGURE GAUGES	ALL DATA WILL BE ERASED
VEHICLE TOOLS	DEVICE INFORMATION	PRESS TO CONTINUE
DEVICE TOOLS	REFORMAT DISK	PRESS TO RETURN

CHANGING THE SETTINGS

This menu allows you to rotate the screen allowing you to change the orientation of the Power Vision device along with adjusting the screen brightness.

Select **Device Tools>Settings>Rotate Screen** to flip the screen.

Select **Device Tools>Settings>Brightness** to change the screen brightness.

DEVICE TOOLS	DEVICE SETTINGS	ROTATE SCREEN
DEVICE INFORMATION	ROTATE SCREEN	THIS WILL FLIP THE SCREEN
REFORMAT DISK	BRIGHTNESS	PRESS TO CONTINUE
SETTINGS		PRESS TO RETURN

DEVICE TOOLS	DEVICE SETTINGS	BRIGHTNESS
DEVICE INFORMATION	ROTATE SCREEN	20%
REFORMAT DISK	BRIGHTNESS	
SETTINGS		PRESS TO CONTINUE
		PRESS TO RETURN

UPDATING THE DEVICE

This menu allows you to update the device with the latest firmware.

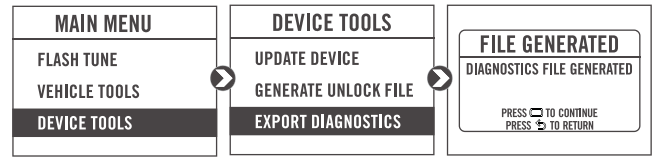
- 1 Go to www.dynojet.com/PowerVision.
- 2 From the top navigation menu, select **Support>Downloads**.
- 3 Click **Power Vision 3**.
- 4 Click the **Firmware** drop-down and download the Power Vision 3 Firmware for Yamaha.
- 5 Save the file to your device.
- 6 Select **Device Tools>Update Device**.

MAIN MENU	DEVICE TOOLS	UPDATE DEVICE
FLASH TUNE	REFORMAT DISK	PV3_6.7523.31749.dfu
VEHICLE TOOLS	SETTINGS	
DEVICE TOOLS	UPDATE DEVICE	

EXPORT DIAGNOSTICS

This menu allows you to create a BIN file containing device information used by Dynojet Tech Support.

- 1 Select **Device Tools**>**Export Diagnostics**.
- 2 If requested by Dynojet Tech Support, connect your Power Vision to a computer and email the BIN file to PV3tech@dynojet.com.



USING THE POWER VISION UPDATE CLIENT

This stand alone application will launch the Update Client allowing you to update your Power Vision with the latest firmware, retrieve additional tunes, or restore the Power Vision to the original Dynojet factory settings.

- 1 Connect the Power Vision to your computer using the included USB cable.
- 2 Navigate to the POWERVISION drive attached to your computer and run the **Update.exe** file.
- 3 Click **Update** to load the current firmware. If the Update button is grayed out, your Power Vision already has the latest firmware.
- 4 Click **Restore** to reload all original Dynojet tune and stock files.
- 5 Click **Get Tunes** to open the Dynojet Tune Finder. Follow the instructions to Upload your PV_Info.txt file and retrieve new tunes.
- 6 Click **Manual Firmware Update** to navigate to and load a version of firmware already saved on your computer.

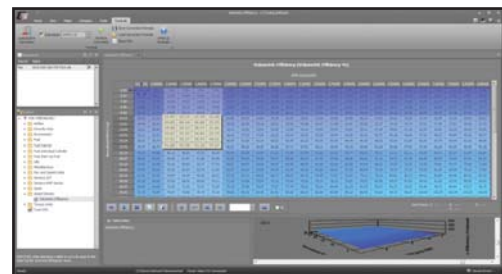


INSTALLING THE POWER CORE SOFTWARE

Download the Power Core software and take tuning to a whole new level.

Note: Downloading the Power Core software is optional and not necessary to use the Power Vision.

- 1 Go to www.dynojet.com/PowerVision.
- 2 From the top navigation menu, select **Support**>**Downloads**.
- 3 Click **Power Vision 3**.
- 4 Click the **Software** drop-down and download the Dynojet Power Core software.
- 5 Double-click the saved file to begin installation. Follow the on-screen prompts. Refer to the Power Core Help for more information.





PUSH THE LIMIT

2191 MENDENHALL DRIVE, NORTH LAS VEGAS, NV 89081 - 800-992-4993 - DYNOJET.COM

© 2020 DYNOJET RESEARCH ALL RIGHTS RESERVED