

Polaris General Doors #06016 Installation & Operations Manual Fits Polaris General



Before You Start:

Please familiarize yourself with all the steps before beginning assembly.

Compatibility Info:

This Door System is designed to work with other Seizmik branded Accessories for the Polaris General as well as OEM Polaris branded hard tops. Please note Seizmik cannot guarantee fitment with other branded aftermarket products. Please research installation details thoroughly on our products & others when trying to combine different branded accessories.

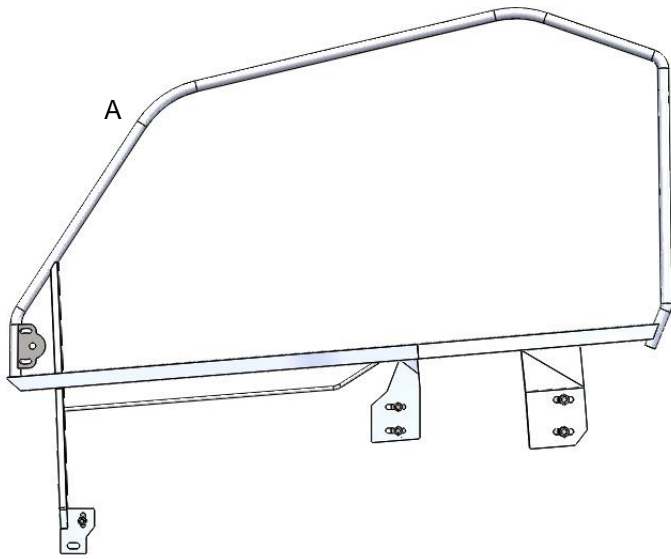
Seizmik makes Windshields, Mirrors, Cab Systems, Light Bars, Storage Boxes, Hood Racks, and other great accessories for UTV's to maximize the vehicles usefulness.

If you have any questions, comments, need assistance, or are missing parts, please call 1-866-838-3366 between 9:00AM and 5:00PM EST or email us at support@seizmik.com. Visit www.seizmik.com for more information on our products.

Polaris General Doors Parts List

Parts shown are driver's side parts. You will have a mirrored part for passenger side.

Door Subframe

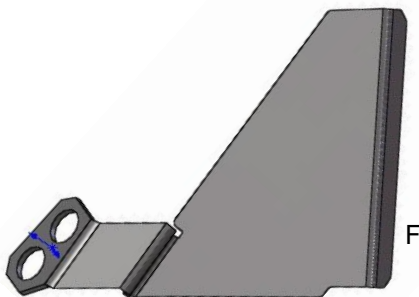
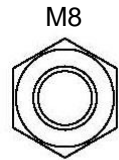
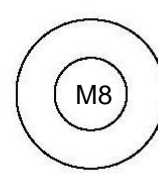
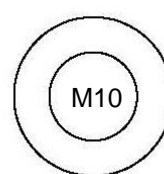
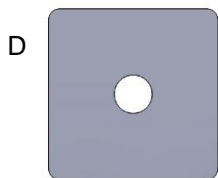
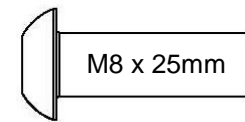
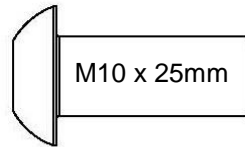
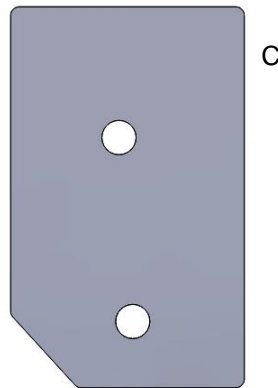
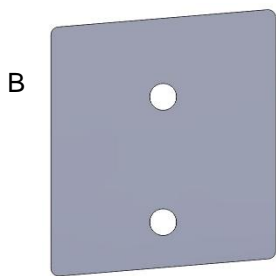


Parts:

- A. Door Subframe(Driver/Passenger)
- B. Middle Backing Plate (Driver/Passenger)
- C. Rear Backing Plate (Driver/Passenger)
- D. Front Spacer Block (x2)
- E. Front Filler Panel Shim (x4)
- F. Front Filler Panel (Driver/Passenger)
- G. Gasket 58.5" (x2)
- H. 6 Feet of adhesive backed Velcro (Hook)

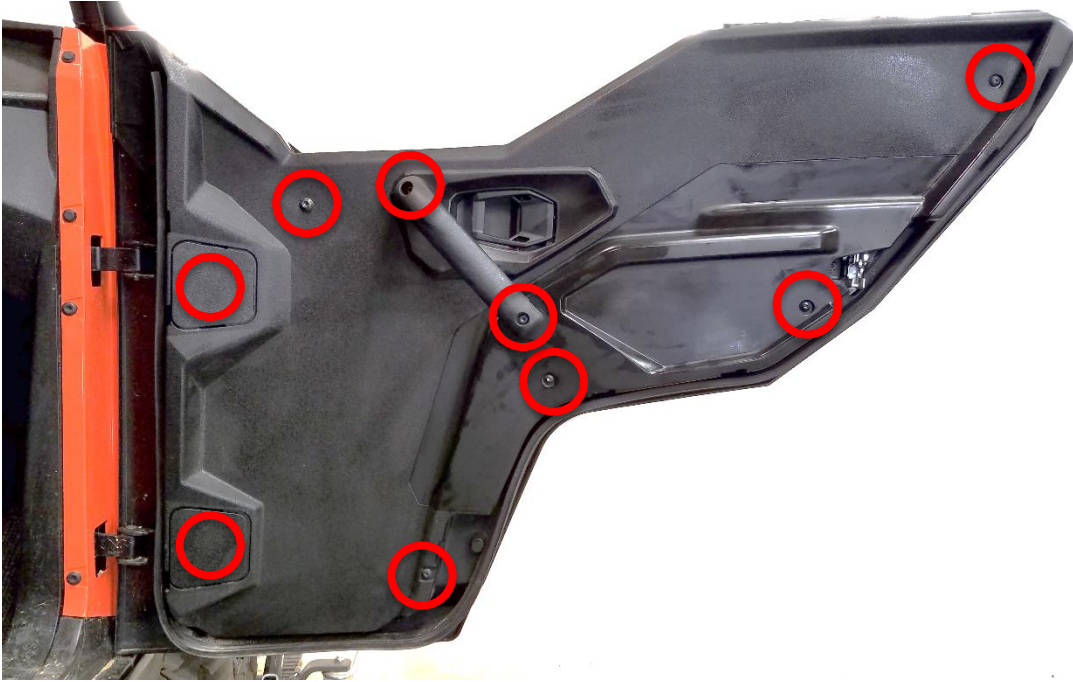
Hardware:

- M10 x 25mm socket button head bolt (x4)
- M8 x 25mm socket Button head bolt (x6)
- M8 Locknut (x2)
- 10mm Washers (x4)
- 8mm Washers (x6)



1. Removal of Factory Inner Door Panels

Passenger's side shown. Repeat for Driver side.



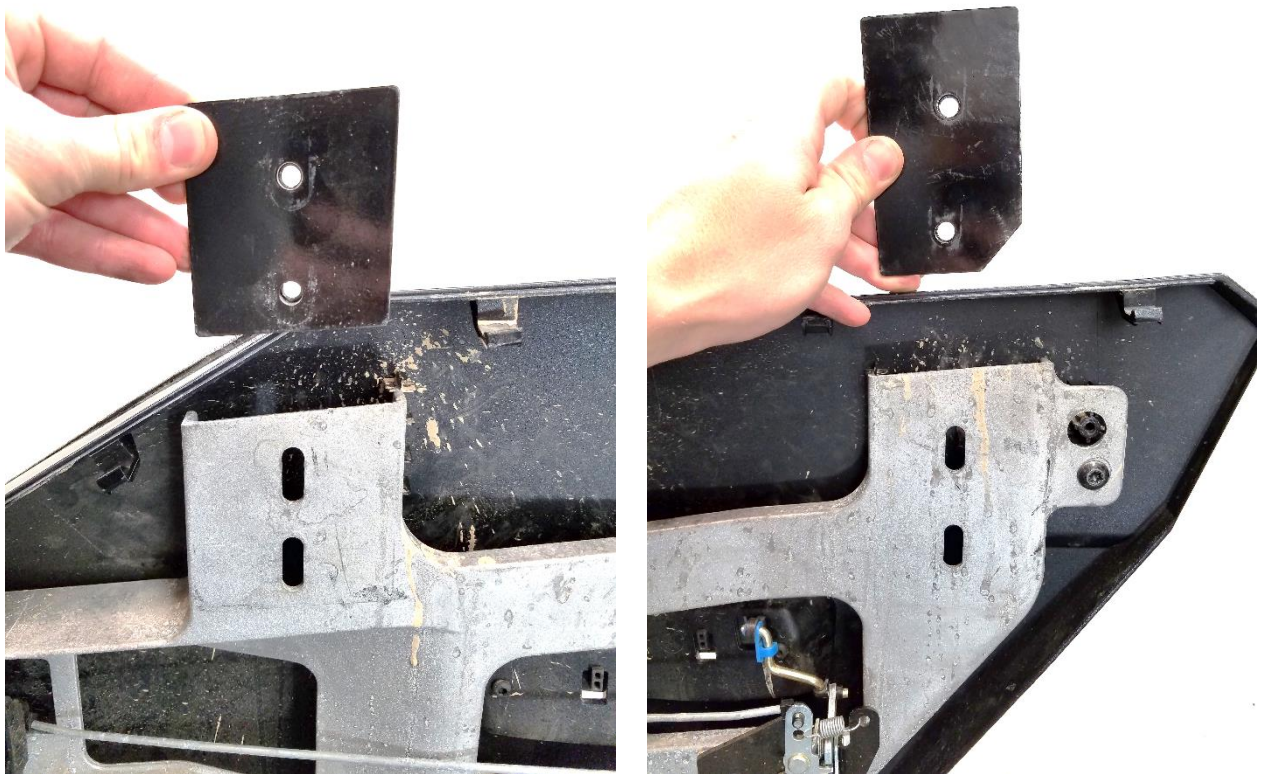
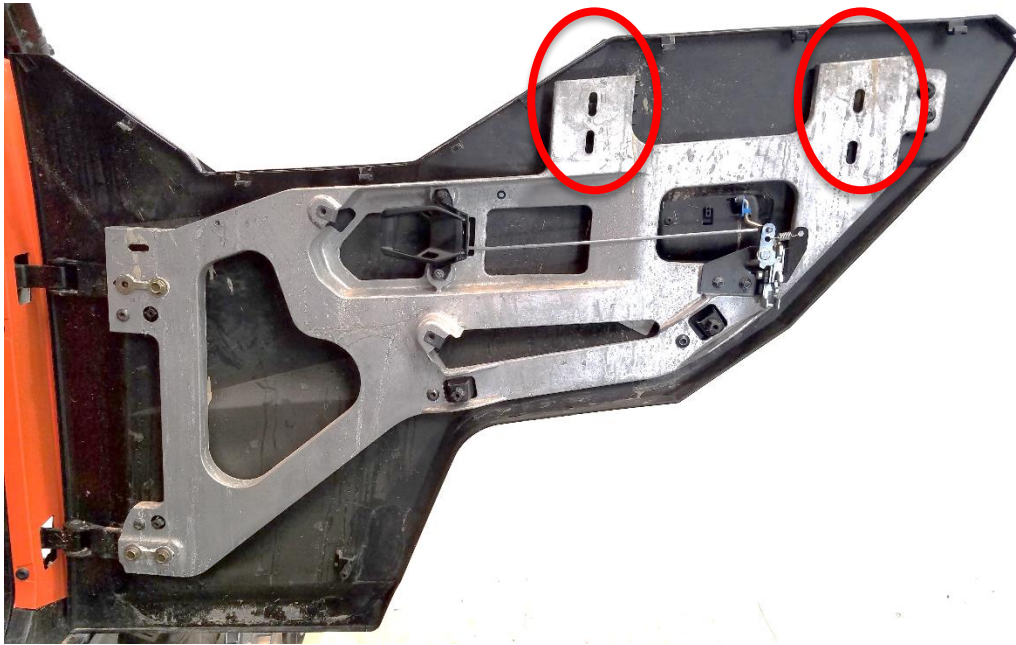
1. Remove the Torx and Allen head fasteners from the locations shown above



2. Use a flat blade screwdriver to remove the hinge adjustment covers to reveal the last two Torx fasteners (top and bottom). Remove the inner door Panel

2. Installation of Upper Doors

Passenger's side shown. Repeat for Driver side.



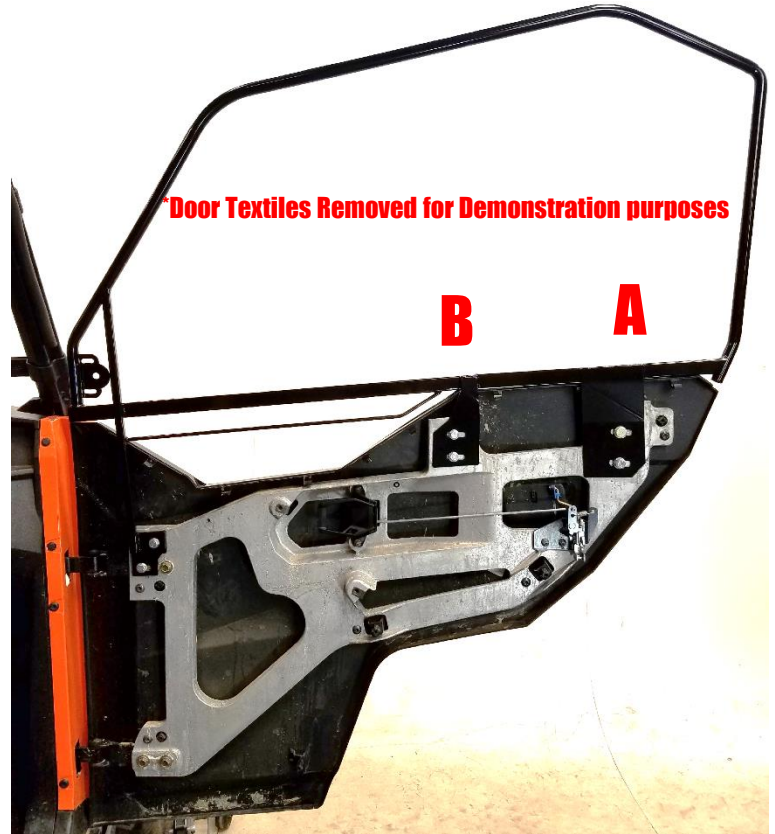
3. Once the inner door panel is removed, insert the backing plates behind the inner aluminum sub-frame with the welded nuts facing towards the outside of the door.

2. Installation of Upper Doors

Passenger's side shown. Repeat for Driver side.



4. Remove the upper door hinge mounting bolt closest to the vehicle as shown above (you will re-use this bolt later).



5. Set the upper door frame onto the existing lower door. Thread the bolts through the door mounting plates and into the backing plates. The M10 bolts will be used in location (A) and M8 Bolts will be used in location (B). (It will help to have a friend hold the door in place while the other threads the bolts in) Do not tighten at this time.



6. Insert the front spacer block between the upper door frame and the aluminum Polaris door frame.



7. Re-install the bolt removed in step 4. Then install an M8-25 and locknut with washer in the top hole of the bracket.

3. Gasket Installation

Passenger's side shown. Repeat for Driver side.



7. Clean the highlighted area of the roll cage with rubbing alcohol or window cleaner. Adhere the provided gasket into the outer channel of the roll cage as shown by the highlighted area above. Be sure the gasket is oriented the same as the image above.

4. Initial Door Adjustment



8. To Adjust the upper door, Slowly close the door and make sure there is no contact and make sure the gap is the same around the entire perimeter. Once its even, carefully open the door and tighten all the mounting bolts installed earlier.



9. The factory Striker pin can be adjusted if the door is not closing easily because of the added weight and force of the door closing against the gasket

5. Fitting Inner door skin

Passenger's side shown. Repeat for Driver side.



10. Hold up the factory inner door skin to the door. Line up a couple screw holes to make sure the skin is aligned correctly on the door. Mark the locations where the upper door frame brackets will interfere with the inner door skin. Trim with a rotary tool or coarse wood file. (Trim a little at a time, test fit and trim until the desired clearance is achieved.) Once trimming is complete, Re-install the factory inner door skin with the factory hardware removed earlier.

6. Installing The Front Filler Panel

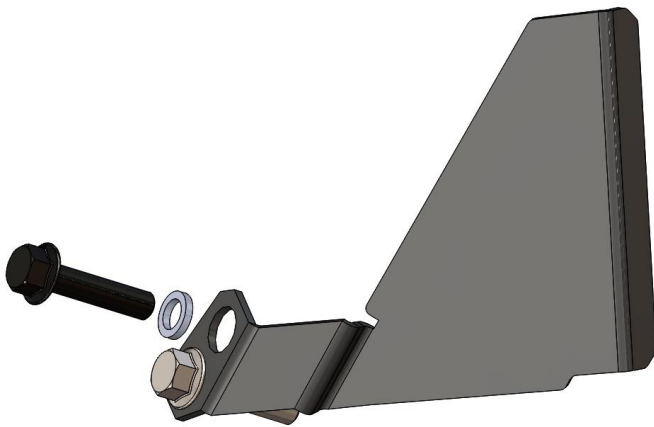
Passenger's side shown. Repeat for Driver side.



11. Remove the factory roll cage bolts.



TIP: Be sure to keep a finger or have a friend hold the nuts in place or they will fall and possibly be hard to locate. A magnet can be your friend here.



12. Install the front filler panel with the front filler panel shims inside the holes as shown above. These act as a crush sleeve for the plastic panel



13. Re-Torque the Factory Cage bolts to Polaris Spec's.

7. Adhering Adhesive Velcro to Door

Passenger's side shown. Repeat for Driver side.



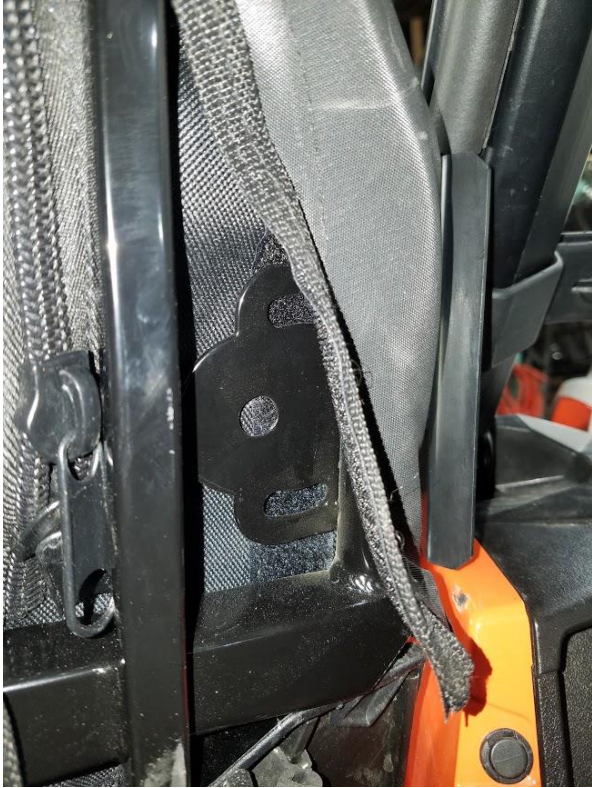
14. Lay the Textile Flap over the outer door plastics and mark the location of the outside perimeter. Clean the designated area with rubbing alcohol or window cleaner.



15. Cut the Velcro to the correct lengths and adhere to the area marked before and stick the flap down.

8. Installing Mirrors with Soft Doors (Opt.)

Driver's side shown. Repeat for Passenger's side.



16. Locate the mirror mounting bracket on the inside of the door frame. Mark the location of the hole with a punch so that it can be seen on the outside of the door textile.



17. Using a sharp razor or utility knife, cut the textile so the mirror mounting bolt can pass through.



18. Pass the bolt through the mounting bracket and thread into the mirror and tighten (DO NOT OVER TIGHTEN).

