

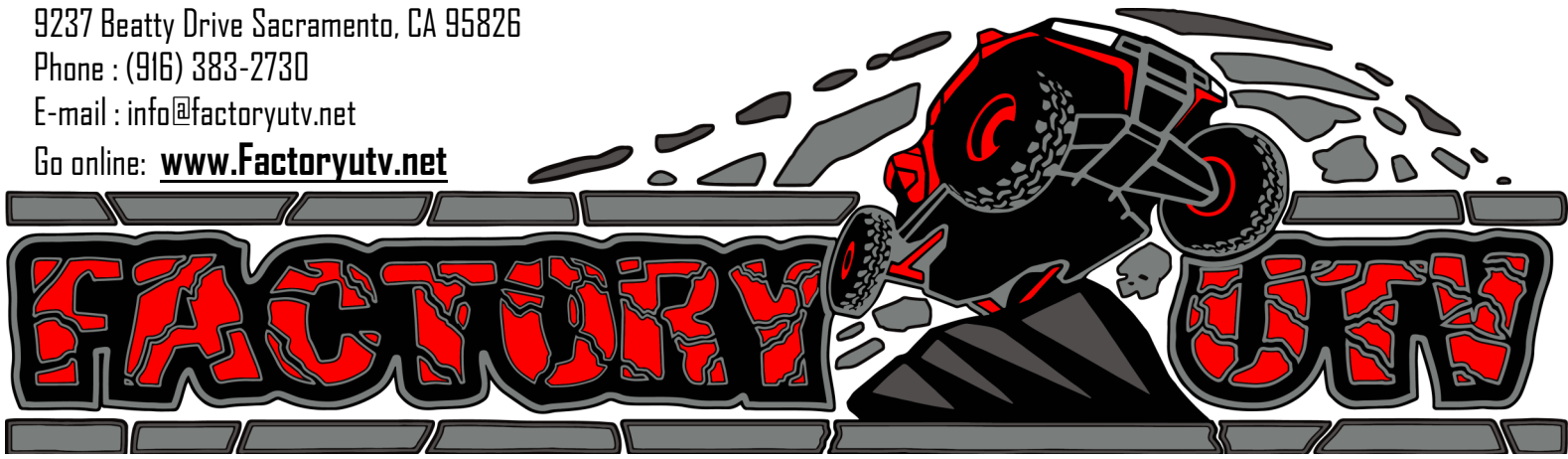
**Contact Us: *FACTORY UTV LLC.***

9237 Beatty Drive Sacramento, CA 95826

Phone : (916) 383-2730

E-mail : [info@factoryutv.net](mailto:info@factoryutv.net)

Go online: [www.Factoryutv.net](http://www.Factoryutv.net)



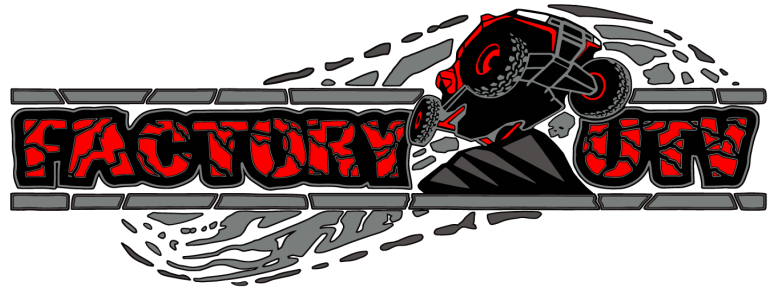
## **U.H.M.W. Skid Plate / Under Armor package**

*Ultra. High. Molecular. Weight. polyethylene all terrain skid plate / under armor kit for UTV's*

### **Installation guide** **(Polaris)** **(RZR XP 4 1000)**



*(Polaris)*  
*(RZR XP 4 1000)*

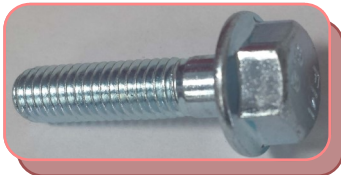


# Skid Plate Mounting Hardware Kit

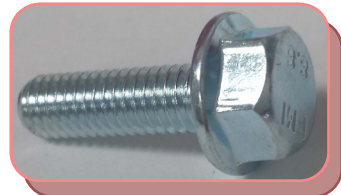
## Main Skid Hardware



**1 & 1/4 "**  
**Clamp Mounts**      **6**



**M6 - 1.0 x 25 mm**  
**Flange Head Bolts**  
 (^ use with clamp mounts ^)      **4**



**M6 - 1.0 x 20 mm**  
**Flange Head Bolts**      **6**



**Counter Sunk Washers**  
 ★      **6**



**Angled**  
**Mounting Brackets**  
 (with attached "J" clip threads)      **2**



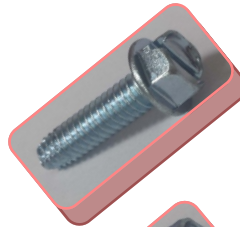
**Cross Member**  
 (with 2 attached "J" clip threads)  
 (\* use M6 - 1.0 x 20 mm)  
 Flange Head Bolts      **1**



## Front Differential

**1/4 - 20 x 3/4 "**  
**Flange Bolt**      **4**

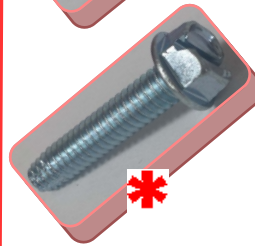
**Counter Sunk Washers**  
 ★      **4**



## Side Hardware

**1/4 - 20 x 1 "**  
**Self Tapping Flange**      **16**

**Counter Sunk Washers**  
 ★      **16**



\* If package includes "Rock Sliders"  
 use 1/4 - 20 x 1 & 1/4" (included)      **\***

## Rear Skid Hardware

**M6 - 1.0 x 20mm**      **3**

**M6 - 1.0 x 25mm**      **4**

**Counter Sunk Washers**  
 ★      **7**



**UMHW (round)**      **2**

*(Polaris)*

*(RZR XP 4 1000)*

## **Brackets & Mounting**

Re-use  
stock bolts  
& hardware

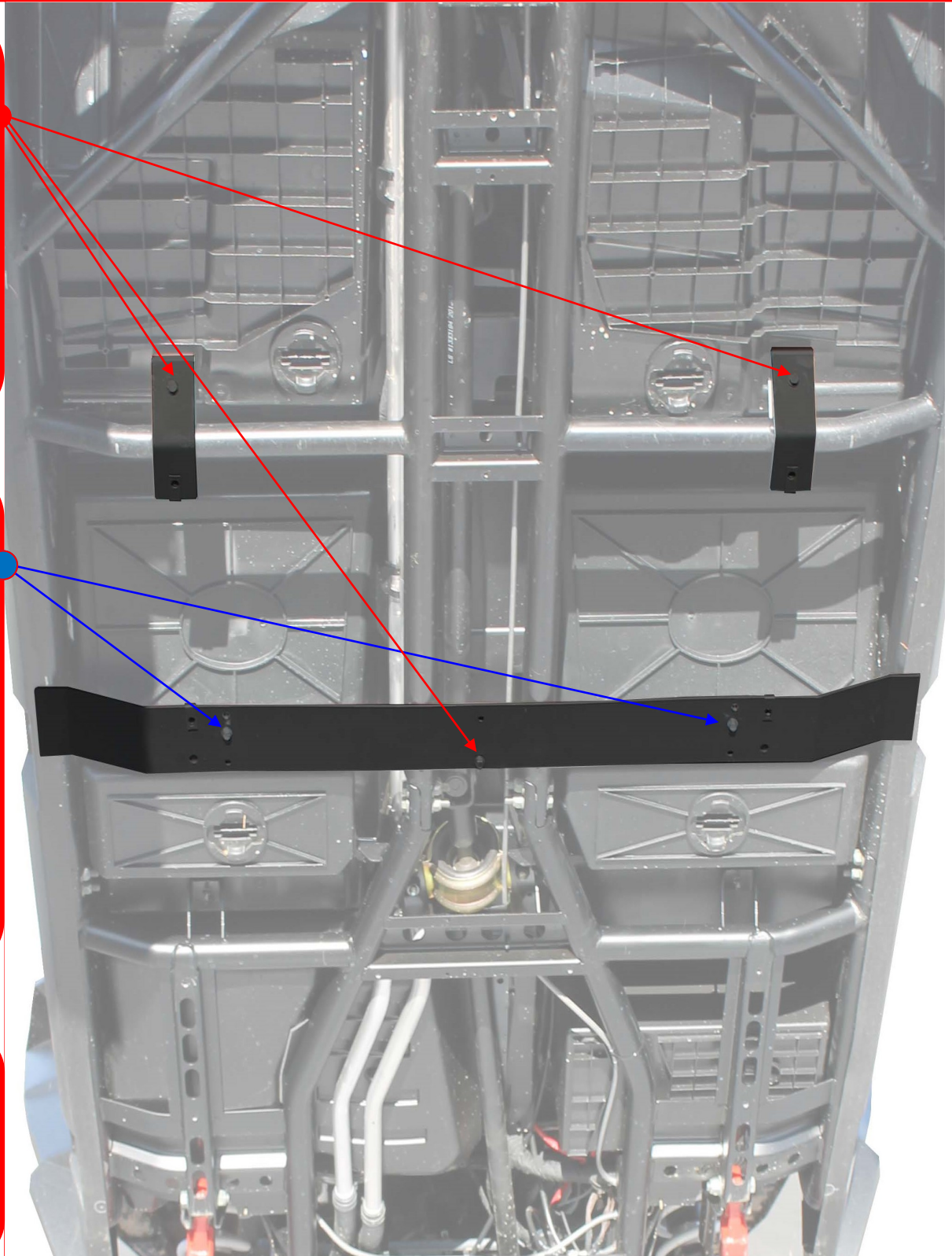
For  
Angled Brackets  
&  
Center bolt of  
Cross Member



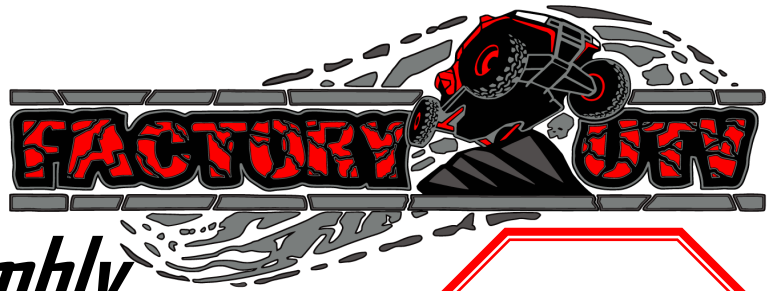
Use: 2x  
1 & 1/4th" Clamps  
to fasten  
Cross member to  
chassis frame

Use:  
M6 - 1.0 x 20 mm  
Flange Head Bolts

Ensure all mounting  
brackets are  
mounted securely in  
place before  
attaching skid plates



*(Polaris)  
(RZR XP 4 1000)*



# Main Skid plate Assembly

Drill 3/16th" Holes  
& Install  
1/4" - 20 x 3/4"  
Self-Tapping Bolts &  
Counter Sunk Washers

#4

**Re-use  
Stock Hardware  
As needed**

*For all bolts not shown here  
Re-use stock bolts*

**\* Use A Floor Jack  
To push up & align the  
skid plate in to place  
before tightening bolts  
\*(Drill all hole as needed)**



Install with 4x  
1 & 1/4th Clamps with  
M6 - 1.0 x 25 mm  
Flange Head Bolts  
& Washers

**Drill Hole's ( 3/16" )  
( as needed )**

- 1) Place Rear skid  
( With Spacers )  
*(Finger tighten all bolts)*
- 2) Place main skid #3
- 3) Place main skid #4
- 4) Place front diff skid
- 5) ***Tighten all bolts  
securely***

#3

Use (3x)  
M6 - 1.0 x 20 mm  
Flange Head Bolts

#2

**(.1)**  
Use  
M6 - 1.0 x 25mm  
Flange Bolts  
&  
UMHW  
Round Spacers  
(Between skid & Frame)

*Skid Plate will Form to the  
Frame of the vehicle  
as the bolts are  
Tightened in to place,  
& will form to a snug fit  
On the vehicle over time*

Drill 3/16" Holes  
& Install 1/4" - 20 x 1"  
Self Tapping Bolts &  
Counter Sunk Washers  
(Along Both Sides)

#1