

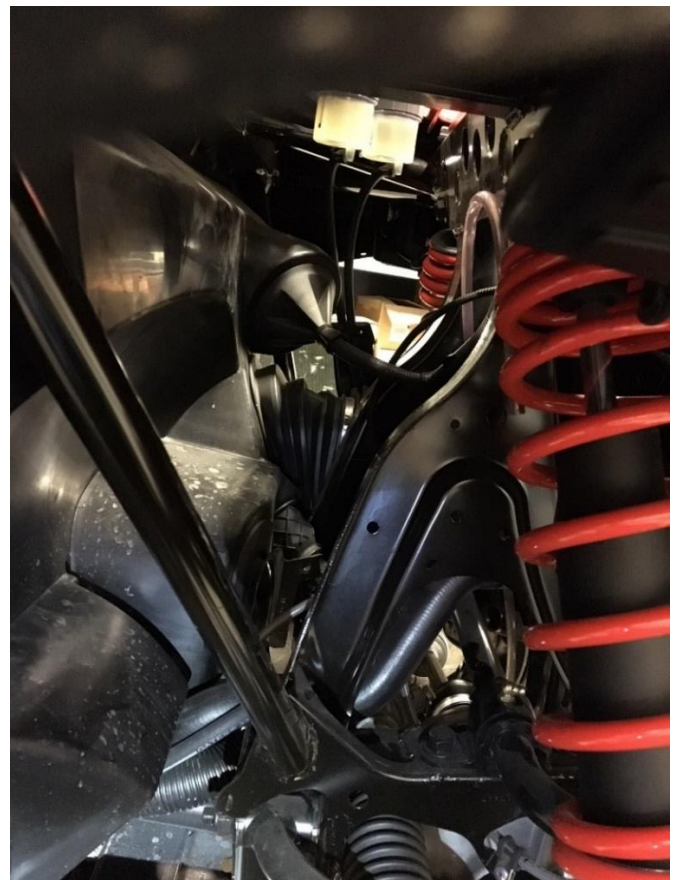
# Z4607

## Can-Am Maverick Trail Cab Heater

**Features:** 2 Speed Hi Output Blower, Blower motor has 4,000 hour Brush Life and 3 year warranty, 4 Fully Adjustable Louvers, Powder coated Steel Case (Not Plastic)

### PRE-INSTALLATION

For ease of installation you will need to remove the center and passenger side hood pieces as well as the passenger side firewall protector. Also, if you do not have hose clamps, you will need to drain the radiator for the Y-Fitting installation.



Take the heater box and place it in the position it will be mounted (see below). Mark the mounting holes and pre-drill with a 1/8" drill bit. Also, mark the spot on the firewall where the heater hose will run to the front of the machine, this spot will be straight off of the inlet/outlet fittings from the heater box (see picture above). Now take a 1 1/2" hole-saw and drill through the firewall, this is where you will run the two heater hoses to the front of the machine.

### **INSTALL LOUVERS AND RUN DUCT**

Before cutting the holes for the defrost louvers use a heat gun to remove the warning sticker. A 2" hole-saw is the size of hole you need for the louvers. There are no exact spots for the louvers, decide the exact spots you want to locate the defrost louvers, mark spots to start the drill bit/hole saw and measure to assure they are level. Now install the louvers into the holes and zip tie the two pieces of duct and run them down in the direction of the heater box. Leave the duct hang while you install the heater box, AFTER installation of the heater box you will do the final attachment of the duct to the heater box (see below).



### **INSTALLING THE HEATER BOX**

Now you can start the final installation of the heater box. To begin, cut your hose into 2 equal pieces and attached them onto the inlet/outlet fittings with the provided hose clamps. Now feed the two hoses through the 1 1/2" hole you previously cut. Take the heater and put it in place as shown in the photo above; mount the mounting brackets with the self-tapping screws provided into the pre-drill holes. Now your heater is in place, attach the duct to the heater box and zip tie into place.

### **INSTALL THE Y-FITTINGS INTO THE RADIATOR LINES**

You need to cut off 1" of the rubber radiator hose to put the Y splices in place. Make sure the when you install the Y-connectors that the Y is opening up going towards the radiator. One is needed on the top hose and one on the bottom hose. See Photos #6 and #7 for pictures of where y-fittings tie into the radiator hose. Once you have hose clamped the splices in place, attach the heater hose and secure with the clamps.

See Y-Fitting Diagram for help on which line to place on which y-fitting.

**E  
N  
G  
I  
N  
E  
  
S  
I  
D  
E**



**connect to the bottom heater fitting (whichever fitting is lowest relative to gravity)**



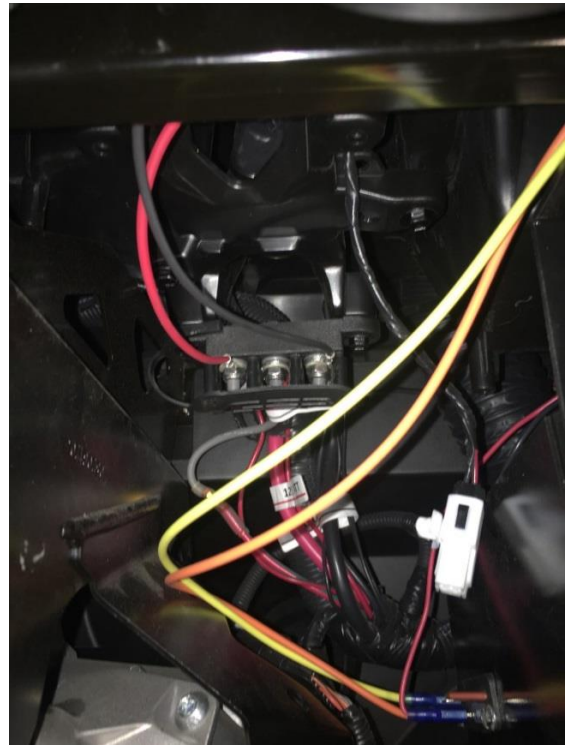
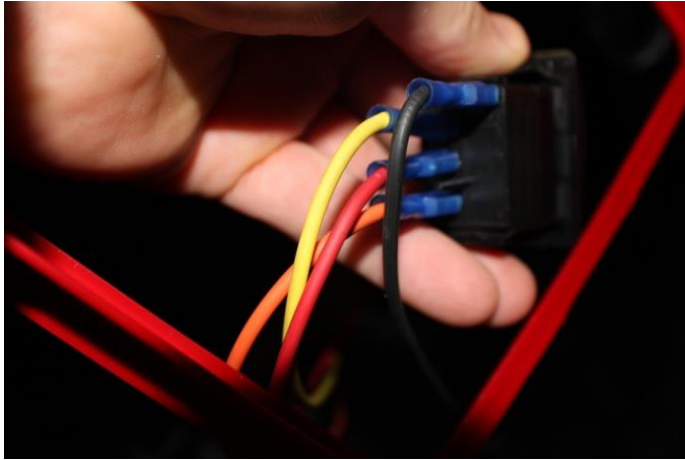
**connect to the top heater fitting (whichever fitting is highest relative to gravity)**

**RADIATOR**



## WIRING

See the photo below for how to hook up the wiring into the back of the switch. The black wire coming off the switch needs to be grounded to the frame. The red wire coming off the switch needs to be ran to the power distribution block on the firewall (see below). The orange and yellow wire coming off the switch go to the blower (already attached).



## REFILL COOLANT

Now you can refill the radiator and check for leaks. Start the machine and allow the engine to warm up and circulate the coolant, once you start getting good heat run the machine. When done using, recheck coolant level and fill if needed, **make sure the radiator is cool before doing so**. It is possible you will need to run the machine and recheck fluid levels multiple times before working out all of the air. See below for coolant location.



If you have any questions please call us at 1-866-730-7169.