

Tusk Quiet-Glide UHMW Skid Plate RZR XP4 1000



Thank you for purchasing a Tusk Quiet-Glide Skid Plate. Please read through all instructions before install to get familiar with product and installation steps.

Note: For instructional videos, refer to www.rockymountainatvmc.com/videos.

Assembly: Before you throw any packaging away, make sure you received all the necessary hardware:

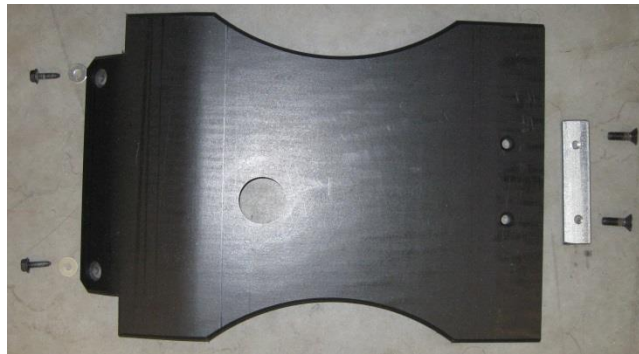
1: Access the bottom of the machine by using automotive ramps, lifts, or wheel blocks. Be sure the machine is safe and secure before you get started. You will need full access to the bottom of the frame. It is possible to install Skid plate without lifting, but may be more difficult.

2: Remove stock skid plate. Keep the stock hardware organized as most of it will be reused.

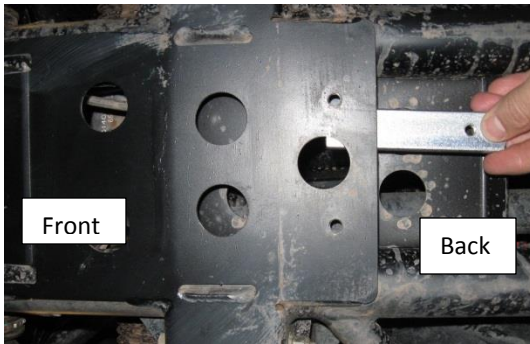
3: Install front diff Skid.

Locate the following parts:

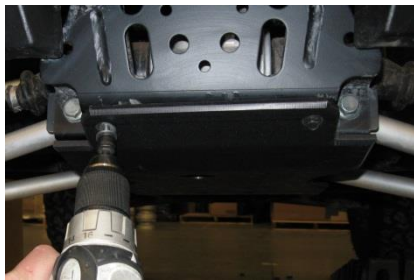
- Front Skid section
- Two stock skid plate bolts
- Two small washers
- Double hole threaded plate
- Two 5/16" X 1" Flat Head Allen bolts



Slip the double hole threaded plate into position from the rear access point as shown in the pictures.



Hold the front skid section in place for install. Use 2 of the stock black M6 X 20 thread cutting bolts and 2 washers to attach the front of the skid. There are two holes already in the frame. It is recommended to use a drill with a socket attachment to drive the bolts into the frame (at slow speed).



Use the two 5/16" X 1" Flat head Allen bolts to attach the rear of the front skid section. Loosely start one bolt through the skid and into the threaded plate, then start the second. You can position the threaded plate by reaching through from the rear, or through a hole above the plate.

4: Install frame brackets to the top side of the main skid section with (16) 5/16" X 5/8" Flat Allen head bolts as shown in Picture.



Leave the back bolts (one on each side) on the front section loose.

5: Install Main Skid section.

Locate 3 of the factory Skid plate bolts and washers. Use a jack or another person to help lift the main skid up into place. Start the 3 factory bolts with washers in the 3 recessed holes. Do not tighten all the way yet.

Adjust the position of the skid so that the two front holes line up with the two holes in the frame. Use a T40 Torx driver to drive two 5/16 X 1" bolts into the frame.

Locate the following hardware (2) M8 X 55mm hex head bolts, (2) M8 X 40mm flat allen head bolts, (2) M8 flat washers, (2) billet tube clamps. This step can be difficult if not performed in the correct order. Start on the passenger side of the RZR. Turn the wheel all the way to the left, or take wheel off to allow room to reach where the billet clamp installs. With the skid still hanging down a little, Start one M8 X 55mm bolt (with washer) through the slotted hole on front lip, and into the billet tube clamp. **(figure 1)** Just thread in a little, (a few full turns).

Use a jack to lift up on skid plate so that it is pressing against the frame tube near the clamp. (see wood block in picture) Now you can hold the end of the bolt that is partially threaded to position the billet clamp for the bottom bolt. **(figure 2)**

Line up the clamp with the lower bolt hole and thread in one M8 X 40mm flat head Allen bolt **(figure 3)**. This can be difficult to see. A small light helps to see the billet clamp hole. Once both bolts are started, tighten the bottom bolt till it gets tight, then tighten the upper bolt till it stops and gets tight. **(figure 4,5)** Repeat all steps on other side.

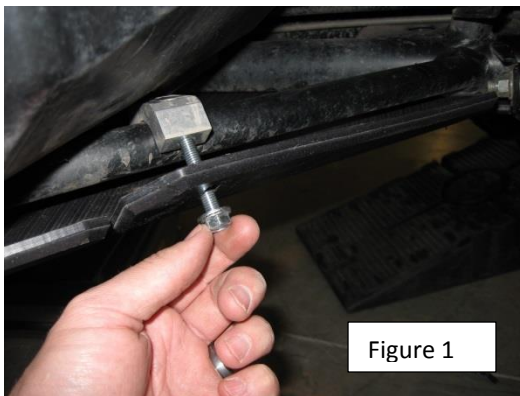


Figure 1

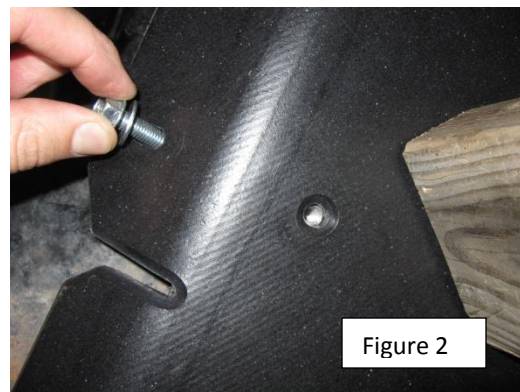


Figure 2

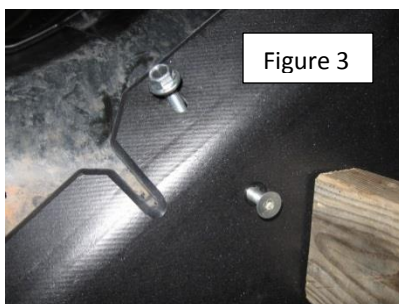


Figure 3

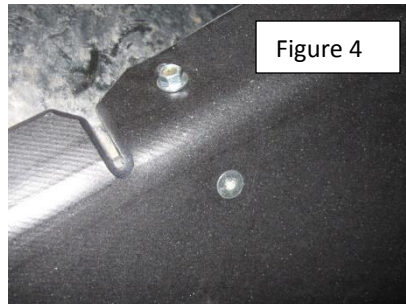


Figure 4

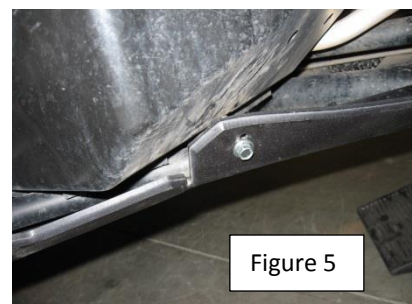
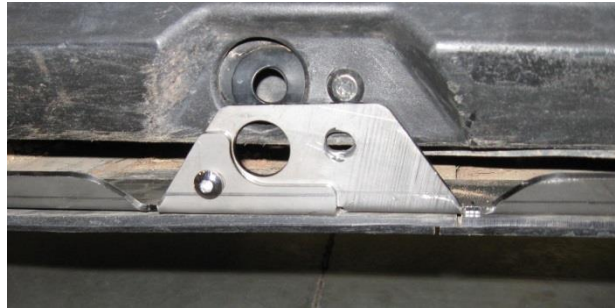


Figure 5

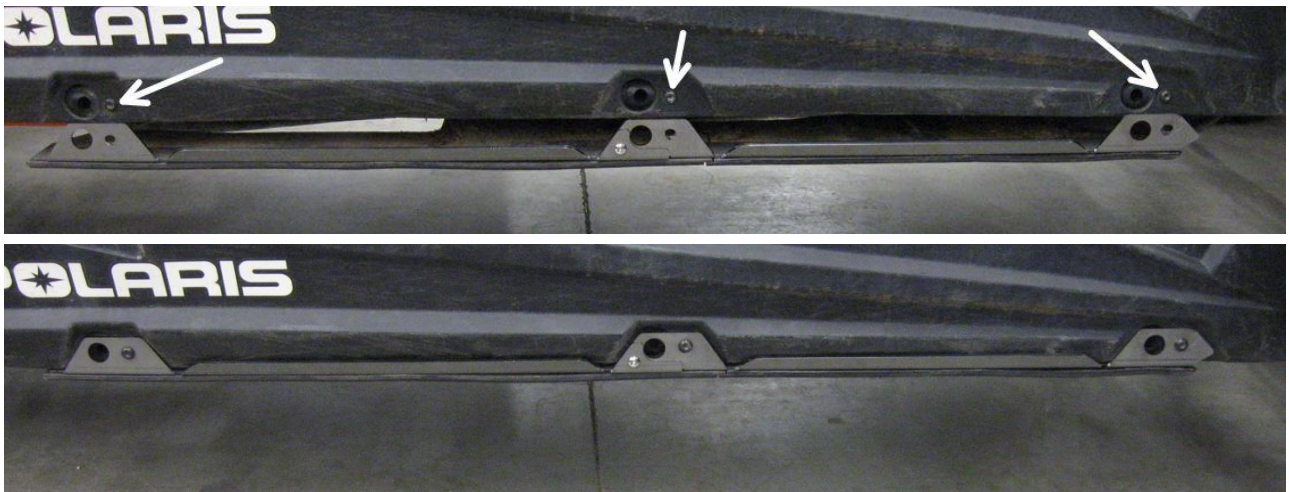
6: Install Main Rear Skid section.

Use a jack, or a helping hand to lift skid section up into place. Slide leading edge under the back edge of main front skid section. You may need to loosen the back bolt on the frame brackets to get them to fit together easily. Use 5 of the factory skid bolts and washers to loosely attach skid plate. These 5 bolts go in the recessed holes that line up with factory threaded holes.

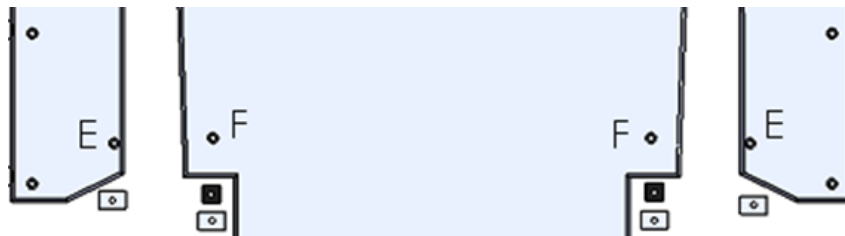
Use the two 5/16" X 3/8" Button Allen head bolts to attach the rear frame brackets to the front frame brackets. (shown in picture below) It is recommended to use a thread lock on these two bolts.



Starting on one side of the RZR, Remove the 3 side frame bolts (3 on each side) with a T40 Torx bit. Lift the side of the skid with the frame bracket into position and re install factory frame bolts through the brackets and into the frame. A jack may be needed to lift the skid into position. Repeat on other side.



There are two mounting holes (one on each side marked "E" in the image below) near the outer side edges by the trailing arm mount. Use two 5/16 X 1" Flat head bolts, and two single hole threaded plates to attach skid. The threaded plates sit in the frame channels above the holes.



There are two more mounting points (marked "F" in the image above) just inside the trailing arm mounts. Use two 5/16 X 1.5" Flat head bolts, two UHMW spacers, and two single hole threaded plates to attach skid. The threaded plates sit in the frame channels above the holes. The UHMW spacers go between frame and skid plate. Install bolt through skid, spacer, frame, and into threaded plate.

7: Install rear Skid section.

Use a jack, or a helping hand to hold the skid up in place. Slide the leading edge underneath the main skid section. Use two stock skid plate bolts and washers to loosely attach the front of the skid. Install the two included M6 X 15mm flanged hex bolts with two factory washers, and two UHMW spacers into the two rear recessed holes. Spacers go between the frame and skid plate.



Check alignment of the rear skid section. The remaining 6 holes in the rear section should line up very close with existing holes in the frame. Tighten the installed bolts when alignment looks good.

Use the included drill bit to drill out the 6 remaining holes. Be careful not to hit anything above the holes when drilling through. (GO SLOW)

Install two 5/16 X 1.5" TORX thread cutting screws, and two UHMW spacers in the back two holes. Spacers go between frame and skid plate.

Install four 5/16 X 1.25" TORX thread cutting screws in the 4 remaining holes in rear section.

8: Drill and tap remaining 4 holes.

(Caution!!! When drilling into frame go slow to make sure you don't push drill bit any further into hole than the needed depth to avoid damage to other components.)

With skid plate installed, use included drill bit to match drill the two inner holes near the two joints of the skid sections as shown in the pictures below. Use a T40 Torx driver to install four 5/16" X 1" Torx thread cutting screws.



Tighten and re-check all skid bolts. Install complete.

A. 1/4" Flat Washer Qty 2



B. Countersunk Torx 5/16" X 1" Qty 10



C. Countersunk Torx 5/16" X 1.5" Qty 2



D. Countersunk Allen 5/16" X 5/8" Qty 16



E. Countersunk Allen 5/16" X 1" Qty 4



F. Countersunk Allen 5/16" X 1.5" Qty 2



G. Countersunk M8 X 40mm Qty 2



H. Hex Head M8 X 55MM Qty 2



I. Hex Head M6 X 15mm Qty 2



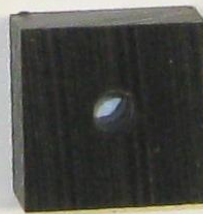
J. Large Flat Washer Qty 2



UHMW Spacer Qty 1



UHMW Spacer Qty 2



Single Hole Plate Qty 4



Double Hole Plate Qty 1



Allen Button Head 5/16" X 3/8" Qty 2

