

RZR SUPER DUAL STAGE AIR FILTER

Application: 2008-2014 Polaris RZR(S) 800

Kit Contents

- 1) 1-DUAL STAGE AIR FILTER KIT
- 2) 1-IN-LINE BREATHER
- 3) 1-SILICONE HOSE INTAKE W/CLAMP
- 4) MOUNTING BRACKET

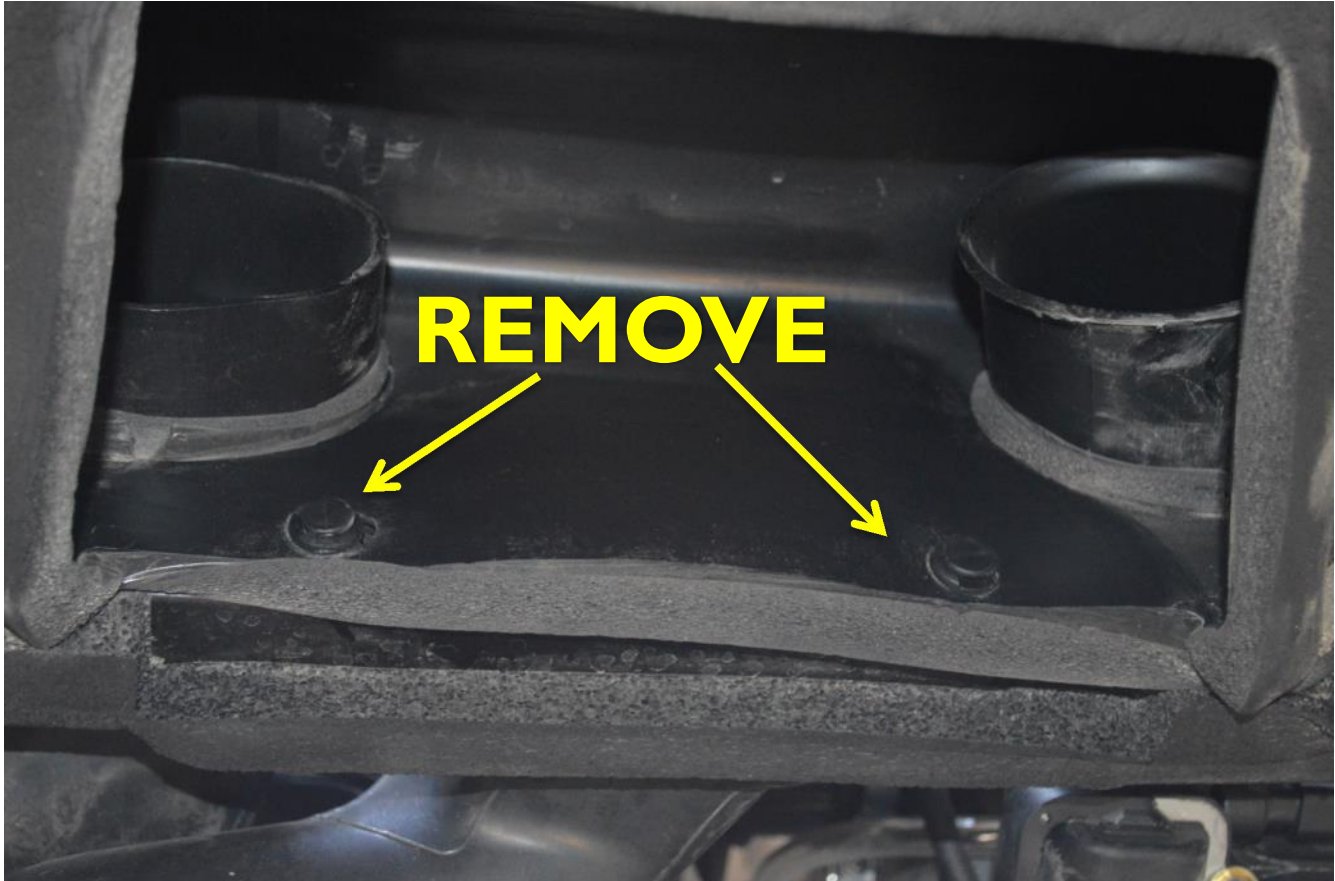
Tools Required

- 1) #2 Phillips Screw Driver
- 2) Metric Wrenches, Sockets
- 3) #27 Torx Bit
- 4) Utility Knife or Equivalent
- 5) Pliers
- 6) Flat Blade Screwdriver

INSTALLATION INSTRUCTIONS

Remove the bed of the RZR by taking out the torx screws and 4 long bolts. Disconnect the tail lights and lift the bed up and over the frame. Once the bed is removed, take off the air intake housing by removing 2 plastic push darts. (Figure 1)

FIGURE 1



Next, disconnect the rubber hose that was connected to the fitting on the stock air filter. Use pliers to move the metal clamp holding the hose onto plastic fitting. This clamp will be reused. (Figure 2)

FIGURE 2

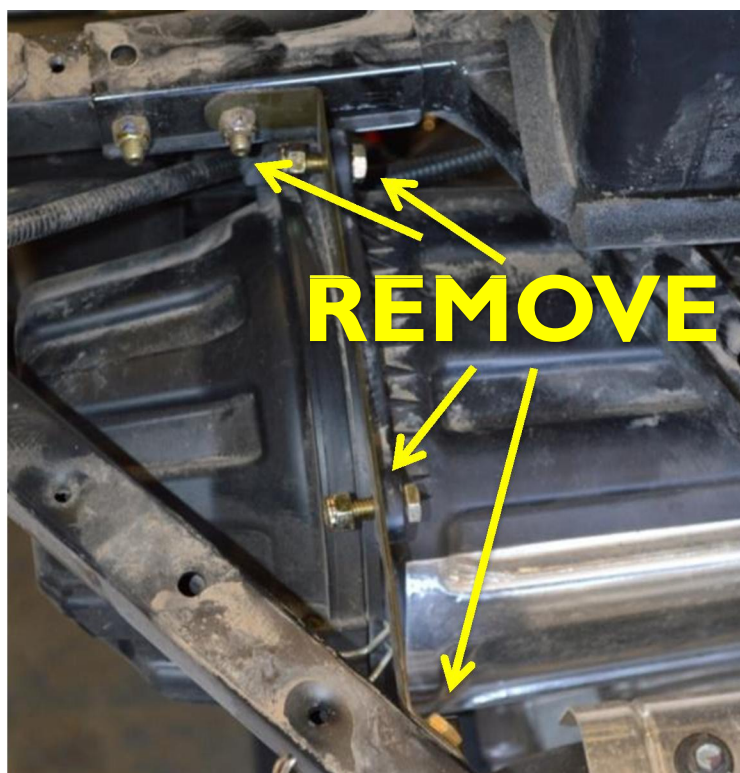


FIGURE 3

Now, remove the 4 bolts and mounting bracket holding the air filter in place. **KEEP NUTS AND BOLTS! THESE ARE REUSED ON NEW FILTER MOUNTING BRACKET!** (Figure 3)

Now, using a Philips screwdriver, loosen the hose clamp attached to the housing assembly. (Figure 4)
Remove stock air filter assembly.

FIGURE 4



Install your new, Mountain Tek Performance Dual Stage Air Filter. (Figure 5) Silicone hose attached to filter housing will need to be removed to install. Attach filter to intake hose. Leave clamp loose for now. .

FIGURE 5

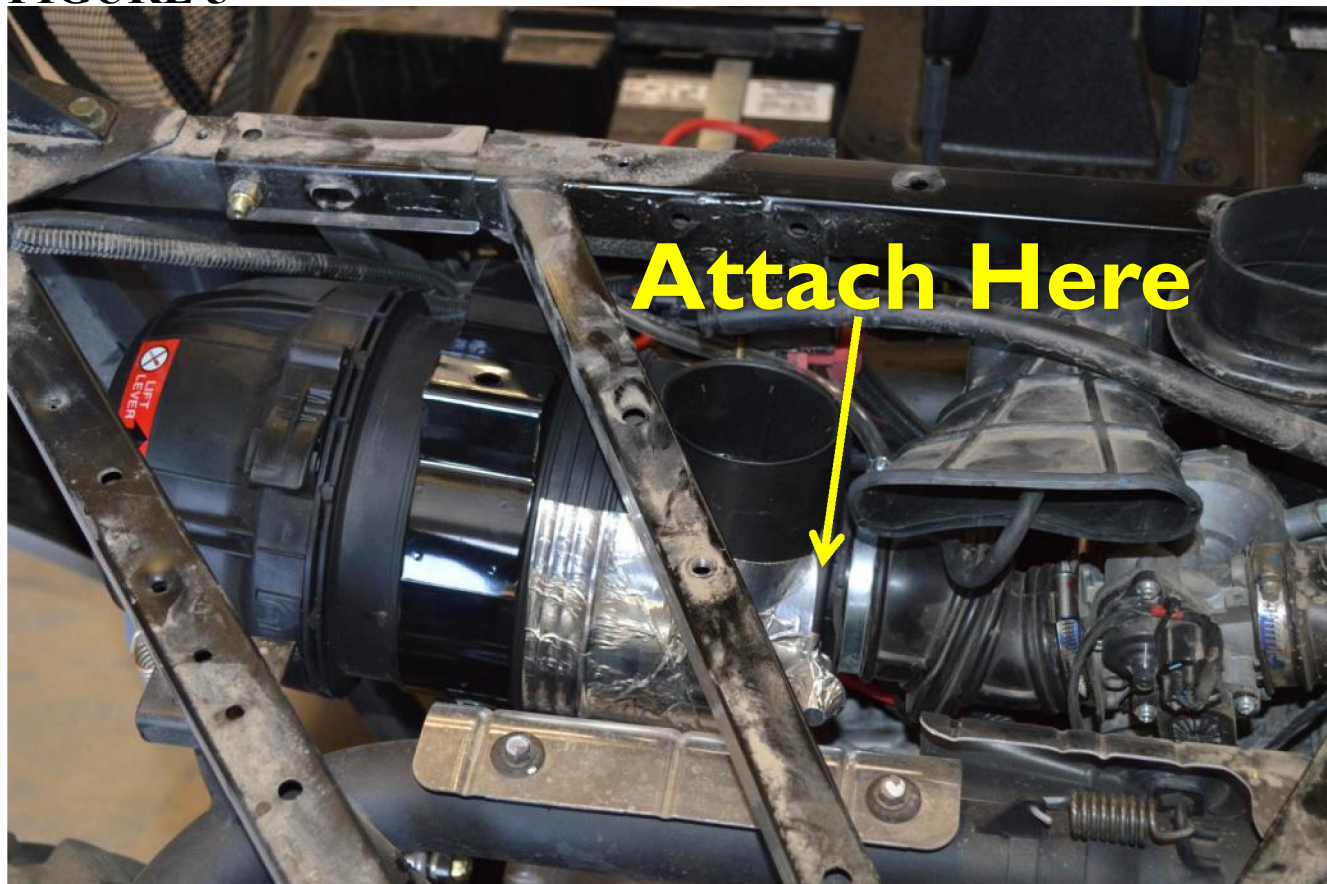
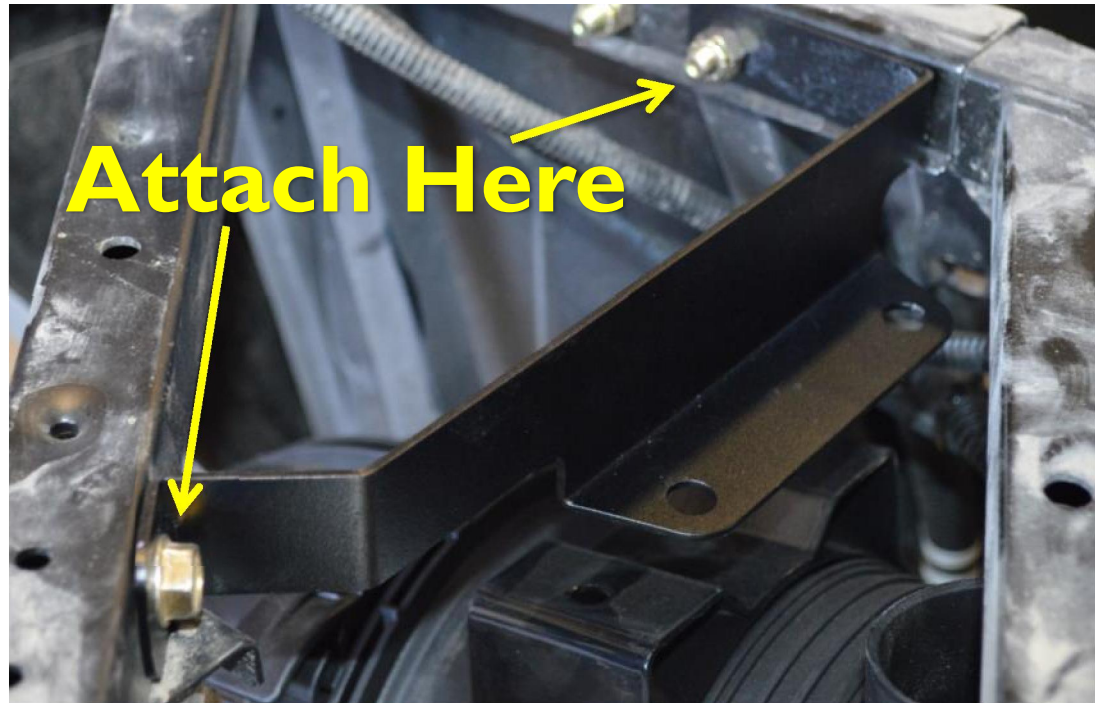
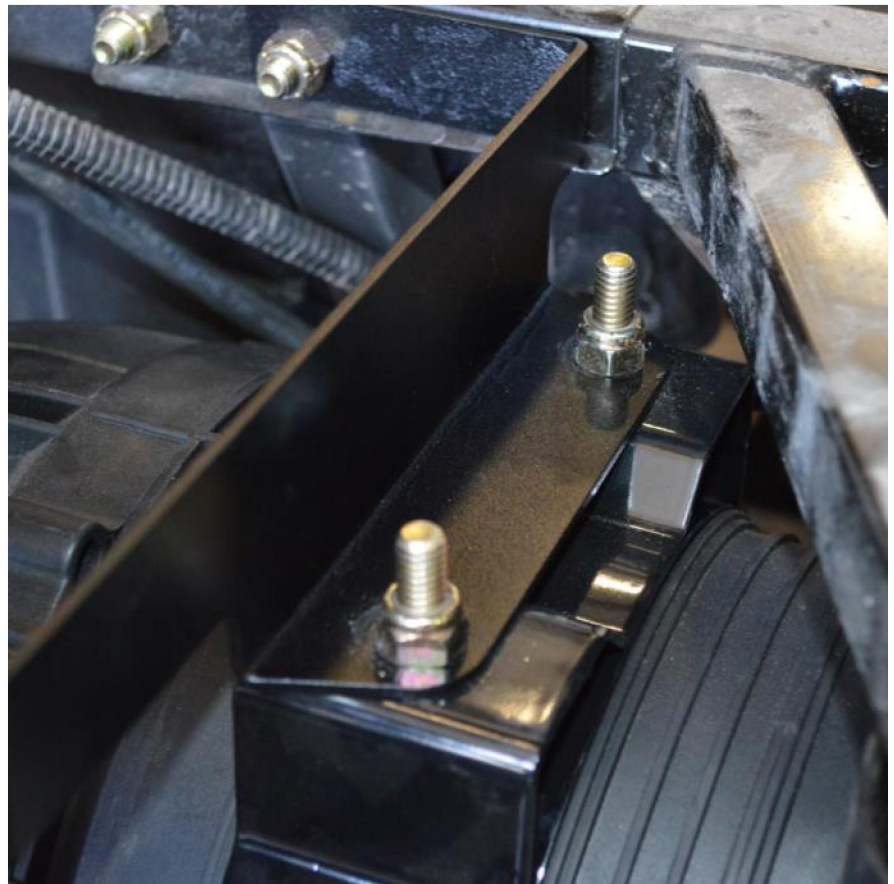


FIGURE 6

Now, using the same bolts from the stock mounting bracket, attach the new mounting bracket as shown. (Figure 6)

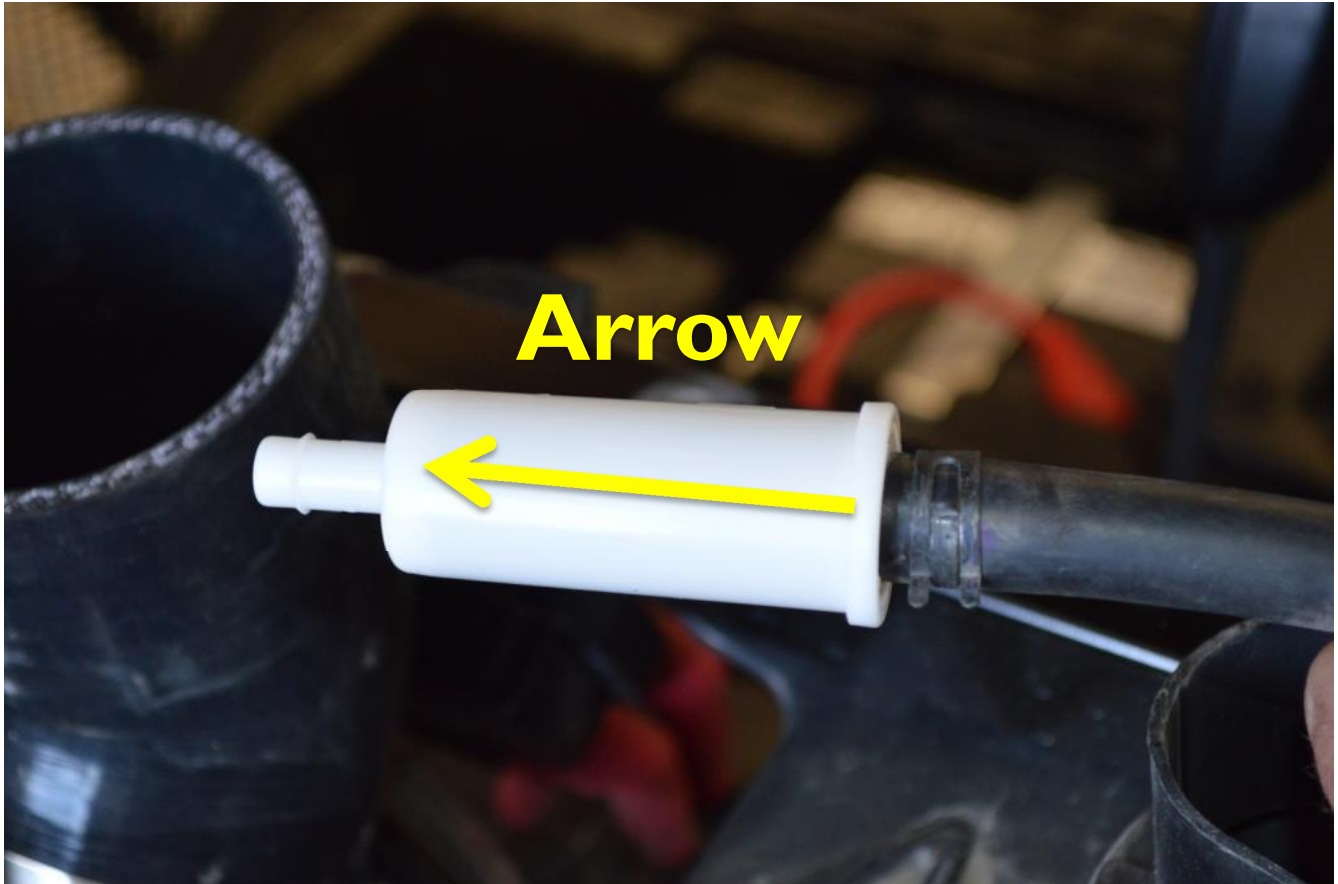
**FIGURE 7**

Next, attach your Mountain Tek Dual Stage Air Filter to your mounting bracket. (Figure 7) Some adjustment may be required. Attach the silicone hose and tighten hose clamp. The hose should look as shown. (Figure 8)

**FIGURE 8**

Install the in-line breather onto the rubber hose that was connected to the fitting on the stock air filter. The breather should have an arrow printed on it. Make sure it is pointing as shown. (Figure 9) Lay filter & hose behind clutch cover.

FIGURE 9



Now, make sure your air filter looks as shown. The dump valve should be pointed straight down. This may require a minor adjustment. Follow directions on lid to unlock filter lid. Then adjust lid to look as shown. (Figure 10)

FIGURE 10



Next, tighten the spring clamp on the bottom side of your air filter. This will hold your filter in place. (Figure 11)

FIGURE 11



Now tighten the hose clamp from figure 5. Take the air intake housing you detached earlier and trim the foam piece around the intake hole. Only trim excess foam from hole. (Figure 12)

FIGURE 12

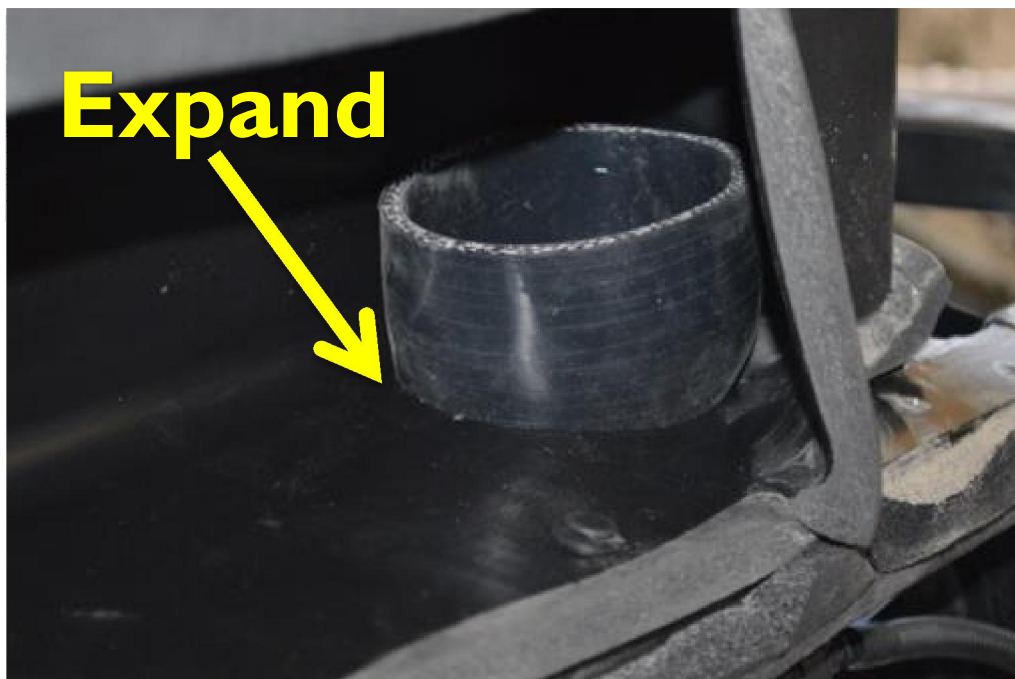


Once trimmed, install air intake housing into original place and insert silicone hose into newly trimmed hole. This will require you to fold intake hose as shown. (Figure 13) Once hose is installed, expand to fit tightly inside trimmed hole. (Figure 14) Put air intake housing into place and reinstall push darts.

FIGURE 13



FIGURE 14



Enjoy your Mountain Tek Performance Dual Stage Air Filter System. Our filter can be run in the dustiest conditions and will purge itself of dust. With the larger element and a dual element design you can run longer and have peace of mind that the engine will not ingest dirt. Regular maintenance is still recommended.